



Dust Collectors



siethom® Group

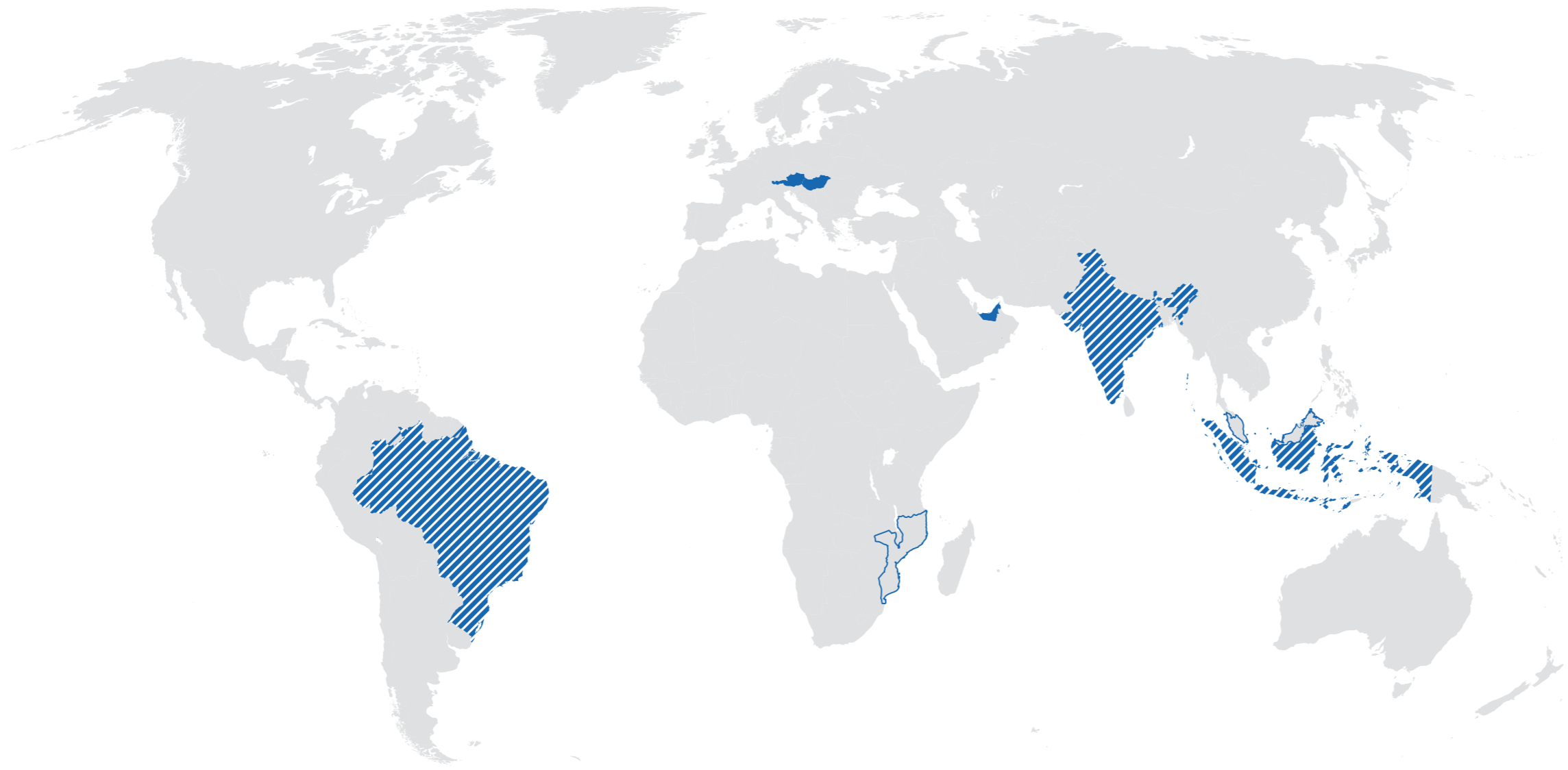
For more than 25 years siethom® is providing special solutions for technology based products. 1993 in Upper Austria / Linz founded attend today a network of associates your concerns. Siethom has been successful in a very dynamic market claimed by ever shorter product life cycles, a strong price pressure and a very high standard of quality.

Index

Page

| | |
|----------------------------------|-------|
| siethom® Worldwide | 3-4 |
| Dust Collectors | 5-6 |
| SILO VENTING FILTERS (N-SERIES) | 7-20 |
| LOCAL DUST COLLECTORS (P-SERIES) | 21-46 |
| INDUSTRIAL FILTRATION (M-SERIES) | 47-68 |

siethom® WORLDWIDE



- Offices**
- Traun, Austria
 - Linz, Austria
 - Hungary
 - Ras Al Khaimah
 - Abu Dhabi
 - Jakarta

- Distributors**
- Brazil
 - India
 - Indonesia

- Looking for Partners**
- Malaysia
 - Mozambique

BENEFITS

siethom®
DUST
COLLECTORS



High durability
in heavy operation



Highly
Customisable



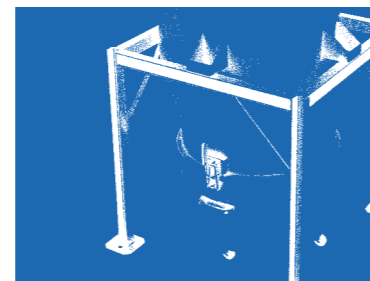
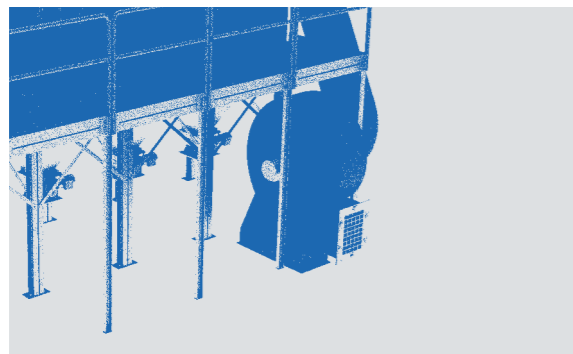
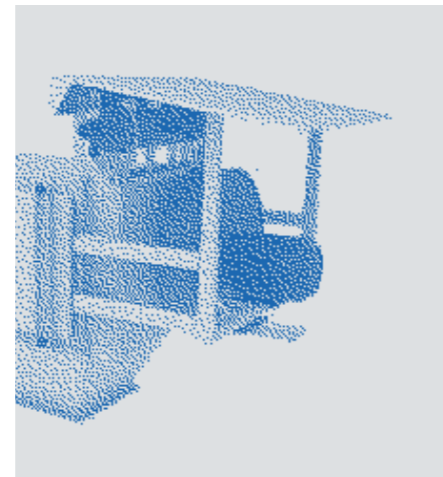
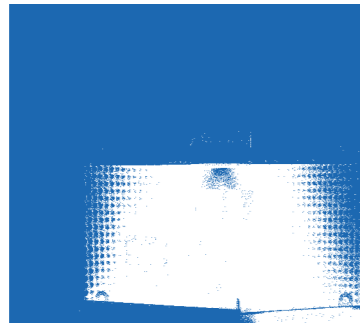
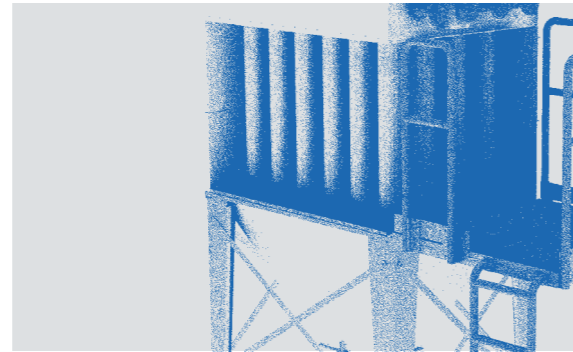
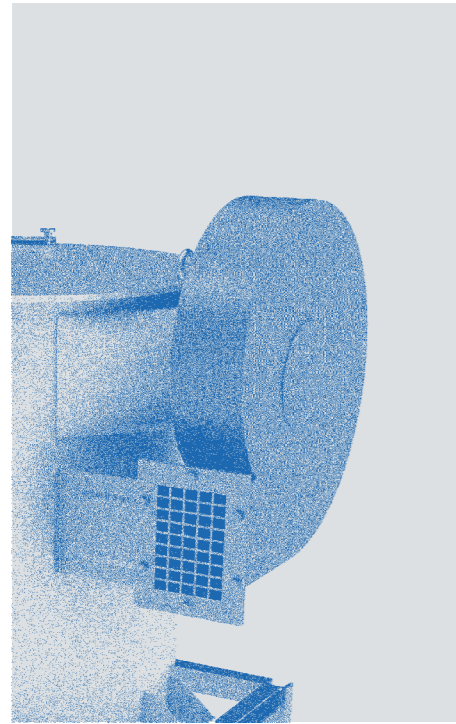
Constant
product Innovation



Simple and
easy to usability



Requires low
maintenance



Dust Collectors

Siethom Group is a leading company worldwide to offer clean solutions for a better environment. One part of our internal division are the products of dust collectors. We offer low-performance standalone dust collectors for local filtration as well as high-performance modular dust collectors.

Advantages:

- control of dust pollution
- avoiding of penalties from authorities for dust
- easy maintenance and simple operation
- compact design

Industries:

- Agriculture
- Bulk and Powder
- Industrial Processing
- Metal Industry
- Pharma Industry
- Waste and Recycling
- Food and Beverage

Our Customers:

- Lafarge Holcim
- CEMEX
- SOMECA
- OMYA
- Saudi Aramco
- Vale Oman



DESCRIPTION

- silo venting filter N1000 is a cylindrically shaped dust collector for dedusting of pneumatically filled silos

OPERATION QUALITIES

- air volume 1000 m³/h
- filtration area 15 m²
- residual dust concentration at the output <10 mg/m³
- temperature resistance -20 °C / +80 °C
- compressed air needed 6 bar, consumption 6 Nm³/h
- pressure loss 1500 Pa
- weight: 97 kg

DESIGN

- carbon steel construction
- dust collector body diameter 600 mm
- filtered air blows away through the hole between casing and top cover
- filter element: 1 filter cartridge
- made of polyester in basic design
- diameter 325 mm, length 1000 mm
- air tank with JET-PULS filter cartridges recovery and timer
- compressed air inlet: internal thread G 1/2"
- electromagnetic valve (1 pc), safety valve (1 pc), pressure regulator (1 pc)

ADDITIONAL ACCESSORIES

- ATEX version
- non-standard temperature design -40 °C / +150 °C

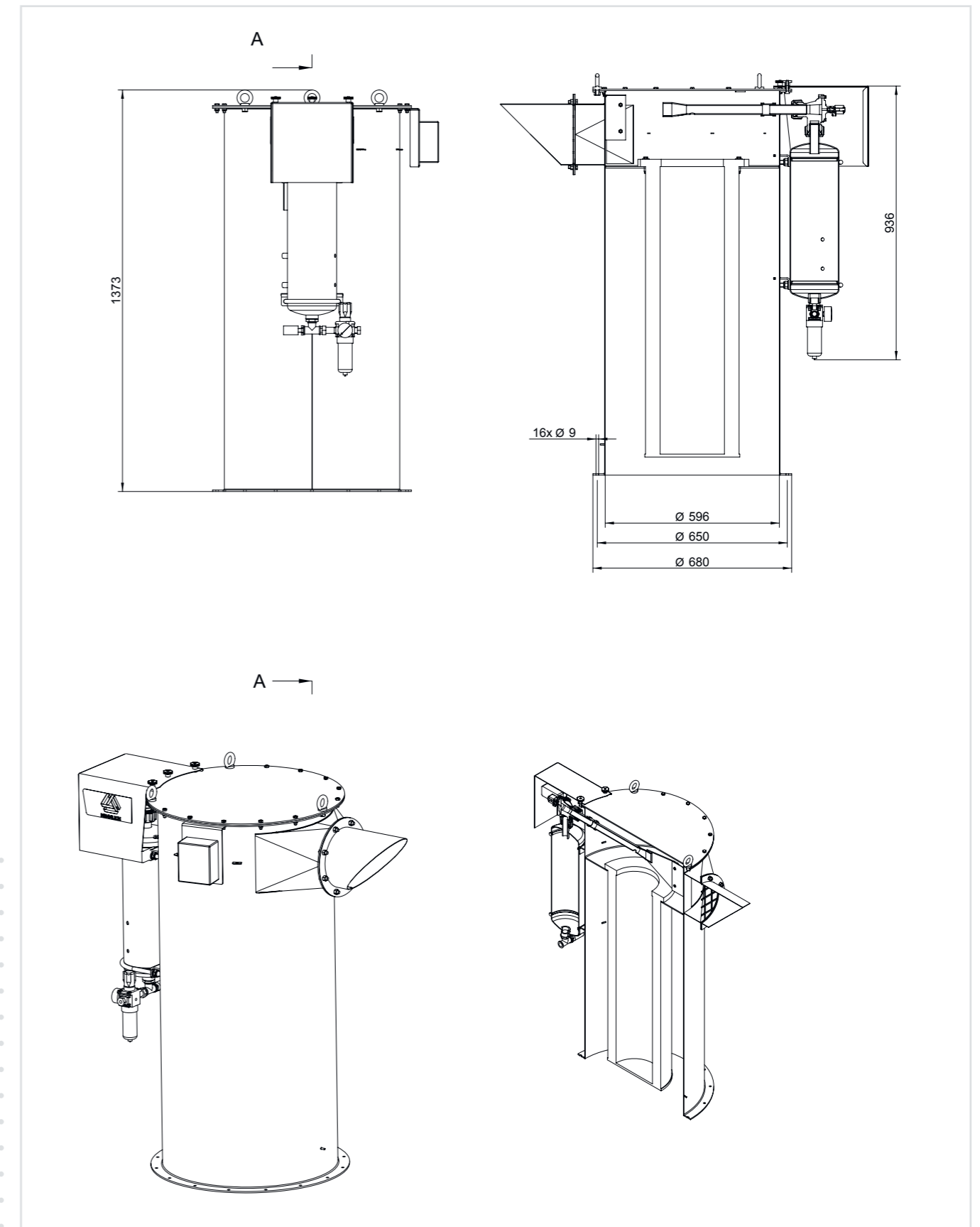
BENEFITS

- robust design
- easy filter element replacement
- low dust emission level
- excellent access to every filter component



Silo venting filter N1000 is a cylindrically shaped dust collector. It is mainly used for dedusting of pneumatically filled silos.

PLANNNS



office@siethomgroup.com

www.siethomgroup.com

DESCRIPTION

- silo venting filter N1000 V is a cylindrically shaped dust collector for dedusting of silos

OPERATION QUALITIES

- air volume 1000 m³/h
- filtration area 15 m²
- fan 1,5 kW
- residual dust concentration at the output <10 mg/m³
- temperature resistance -20 °C / +80 °C
- compressed air needed 6 bar, consumption 6 Nm³/h
- pressure loss 1500 Pa
- weight: 138 kg

DESIGN

- carbon steel construction
- dust collector body diameter 600 mm
- filter element: 1 filter cartridge
- made of polyester in basic design
- diameter 325 mm, length 1000 mm
- air tank with JET-PULS filter cartridges recovery and timer
- compressed air inlet: internal thread G 1/2"
- electromagnetic valve (1 pc), safety valve (1 pc), pressure regulator (1 pc)

ADDITIONAL ACCESSORIES

- ATEX version
- non-standard temperature design -40 °C / +150 °C

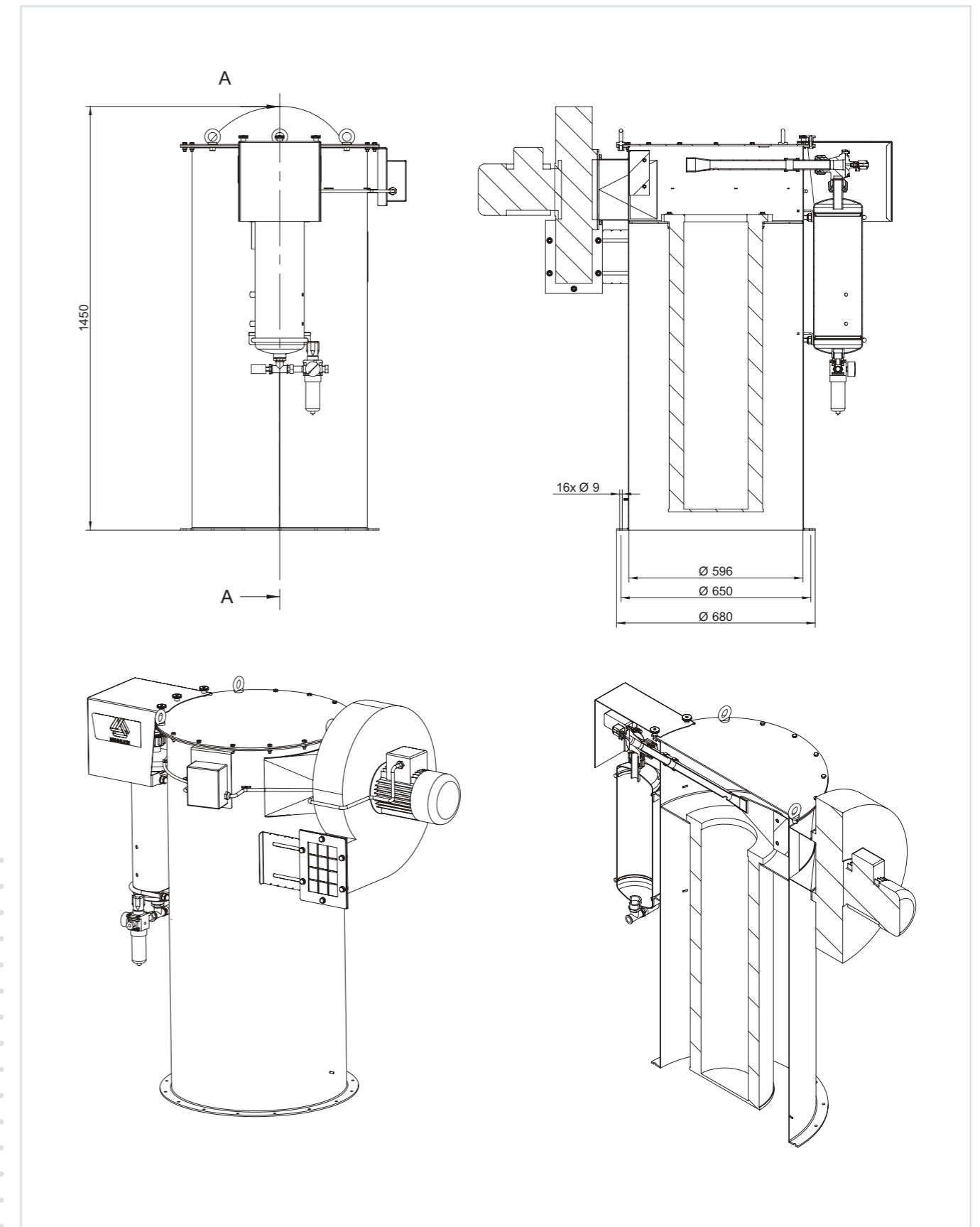
BENEFITS

- robust design
- easy filter element replacement
- low dust emission level
- excellent access to every filter component



Silo venting filter N1000 V is a cylindrically shaped dust collector. It is mainly used for dedusting of silos and for local filtration.

PLANNNS



office@siethomgroup.com

www.siethomgroup.com

DESCRIPTION

- silo venting filter N1000 V/N is a cylindrically shaped dust collector with dust container and support legs suitable for local dedusting (for example – big bags, welding operations etc.)

OPERATION QUALITIES

- air volume 1000 m³/h
- filtration area 15 m²
- fan 1,5 kW
- residual dust concentration at the output <10 mg/m³
- temperature resistance -20 °C / +80 °C
- compressed air needed 6 bar, consumption 6 Nm³/h
- pressure loss 1500 Pa
- weight: 206 kg

DESIGN

- carbon steel construction
- dust collector body diameter 600 mm
- filter element: 1 filter cartridge
- made of polyester in basic design
- diameter 325 mm, length 1000 mm
- air tank with JET-PULS filter cartridges recovery and timer
- compressed air inlet: internal thread G 1/2"
- electromagnetic valve (1 pc), safety valve (1 pc), pressure regulator (1 pc)
- dust container and support legs

ADDITIONAL ACCESSORIES

- ATEX version
- non-standard temperature design -40 °C / +150 °C

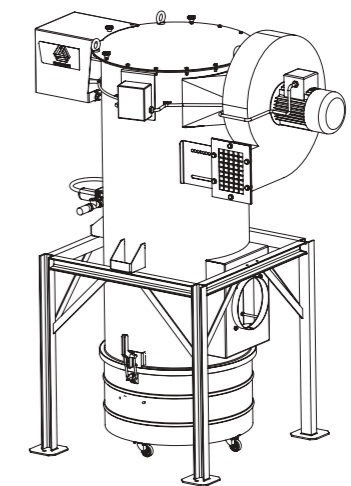
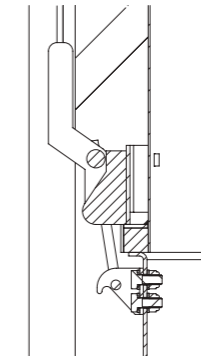
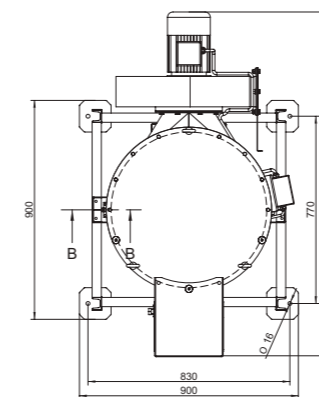
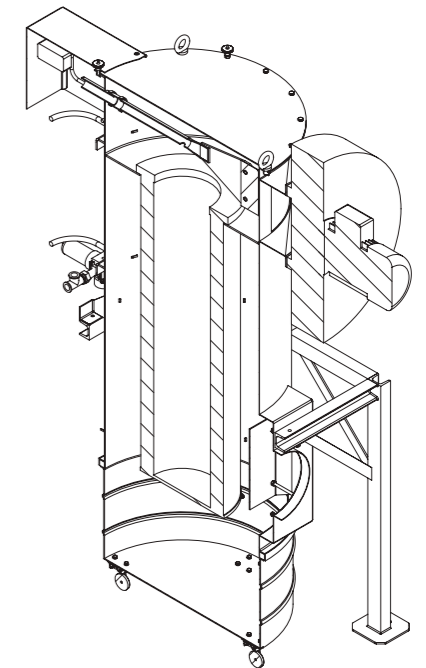
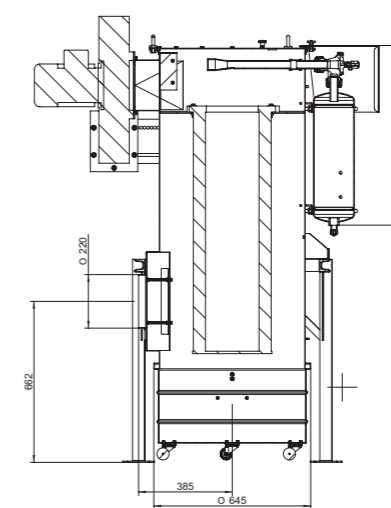
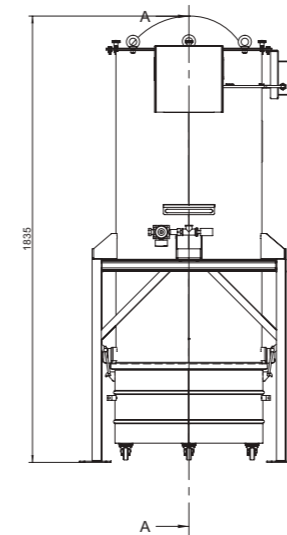
BENEFITS

- robust design
- easy filter element replacement
- low dust emission level
- excellent access to every filter component



Silo venting filter N1000 V/N is equipped with the support legs and the dust container. It is mainly used for local filtration.

PLANS



office@siethomgroup.com

www.siethomgroup.com

DESCRIPTION

- silo venting filter N1000 is a cylindrically shaped dust collector for dedusting of pneumatically filled silos

OPERATION QUALITIES

- air volume 1500 m³/h
- filtration area 24 m²
- residual dust concentration at the output <10 mg/m³
- temperature resistance -20 °C / +80 °C
- compressed air needed 6 bar, consumption 6 Nm³/h
- pressure loss 1500 Pa
- weight: 132 kg

DESIGN

- carbon steel construction
- dust collector body diameter 600 mm
- filtered air blows away through the hole between casing and top cover
- filter element: 1 filter cartridge
- made of polyester in basic design
- diameter 325 mm, length 1500 mm
- air tank with JET-PULS filter cartridges recovery and timer
- compressed air inlet: internal thread G 1/2"
- electromagnetic valve (1 pc), safety valve (1 pc), pressure regulator (1 pc)

ADDITIONAL ACCESSORIES

- ATEX version
- non-standard temperature design -40 °C / +150 °C

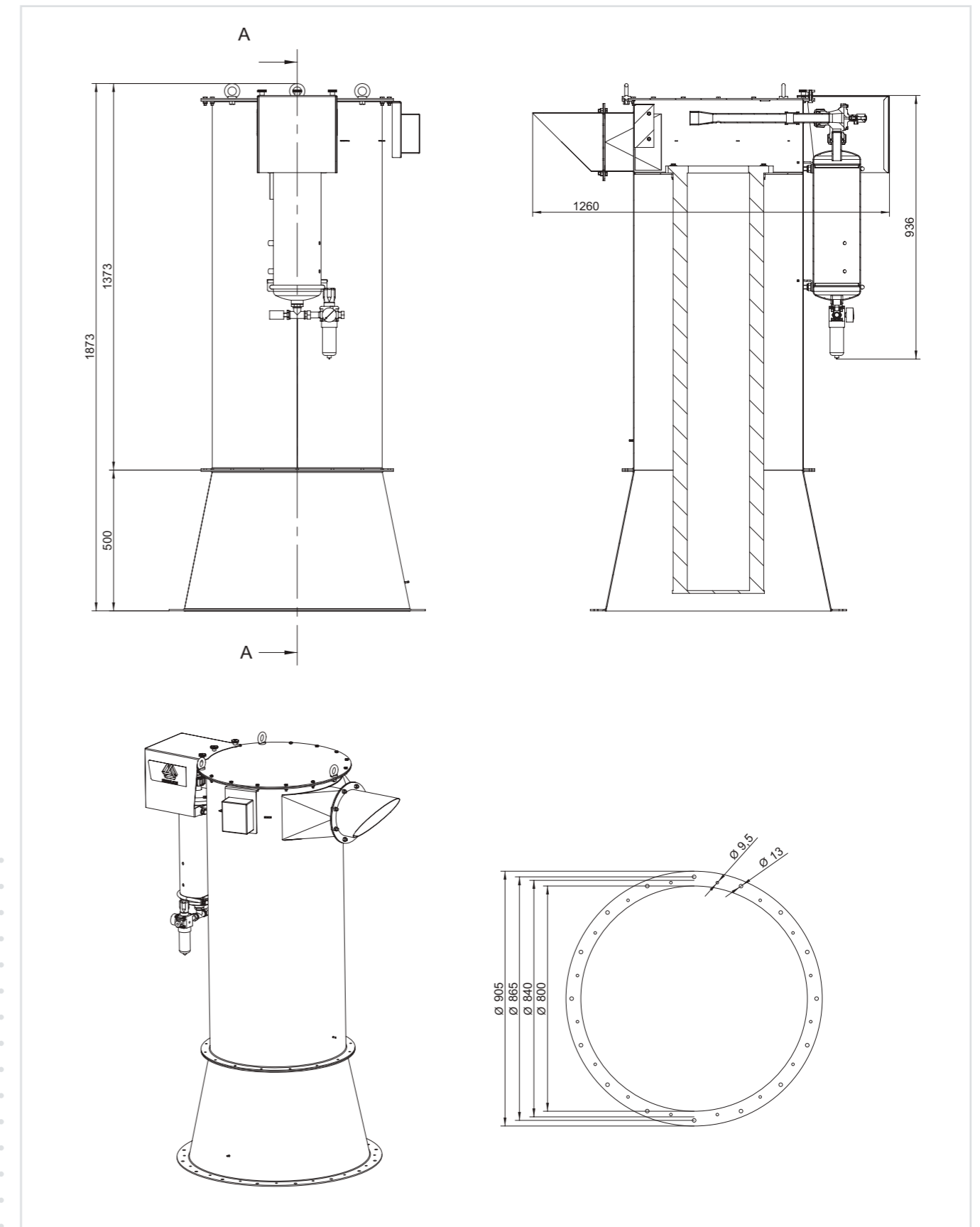
BENEFITS

- robust design
- easy filter element replacement
- low dust emission level
- excellent access to every filter component



Silo venting filter N1500 is a cylindrically shaped dust collector. It is mainly used for dedusting of pneumatically filled silos.

PLANNNS



office@siethomgroup.com

www.siethomgroup.com

DESCRIPTION

- silo venting filter N1500 V is a cylindrically shaped dustcollector for dedusting of silos

OPERATION QUALITIES

- air volume 1500 m³/h
- filtration area 24 m²
- fan 2,2 kW
- residual dust concentration at the output <10 mg/m³
- temperature resistance -20 °C / +80 °C
- compressed air needed 6 bar, consumption 6 Nm³/h
- pressure loss 1500 Pa
- weight: 173 kg

DESIGN

- carbon steel construction
- dust collector body diameter 600 mm
- filter element: 1 filter cartridge
- made of polyester in basic design
- diameter 325 mm, length 1500 mm
- air tank with JET-PULS filter cartridges recovery and timer
- compressed air inlet: internal thread G 1/2"
- electromagnetic valve (1 pc), safety valve (1 pc), pressure regulator (1 pc)

ADDITIONAL ACCESSORIES

- ATEX version
- non-standard temperature design -40 °C / +150 °C

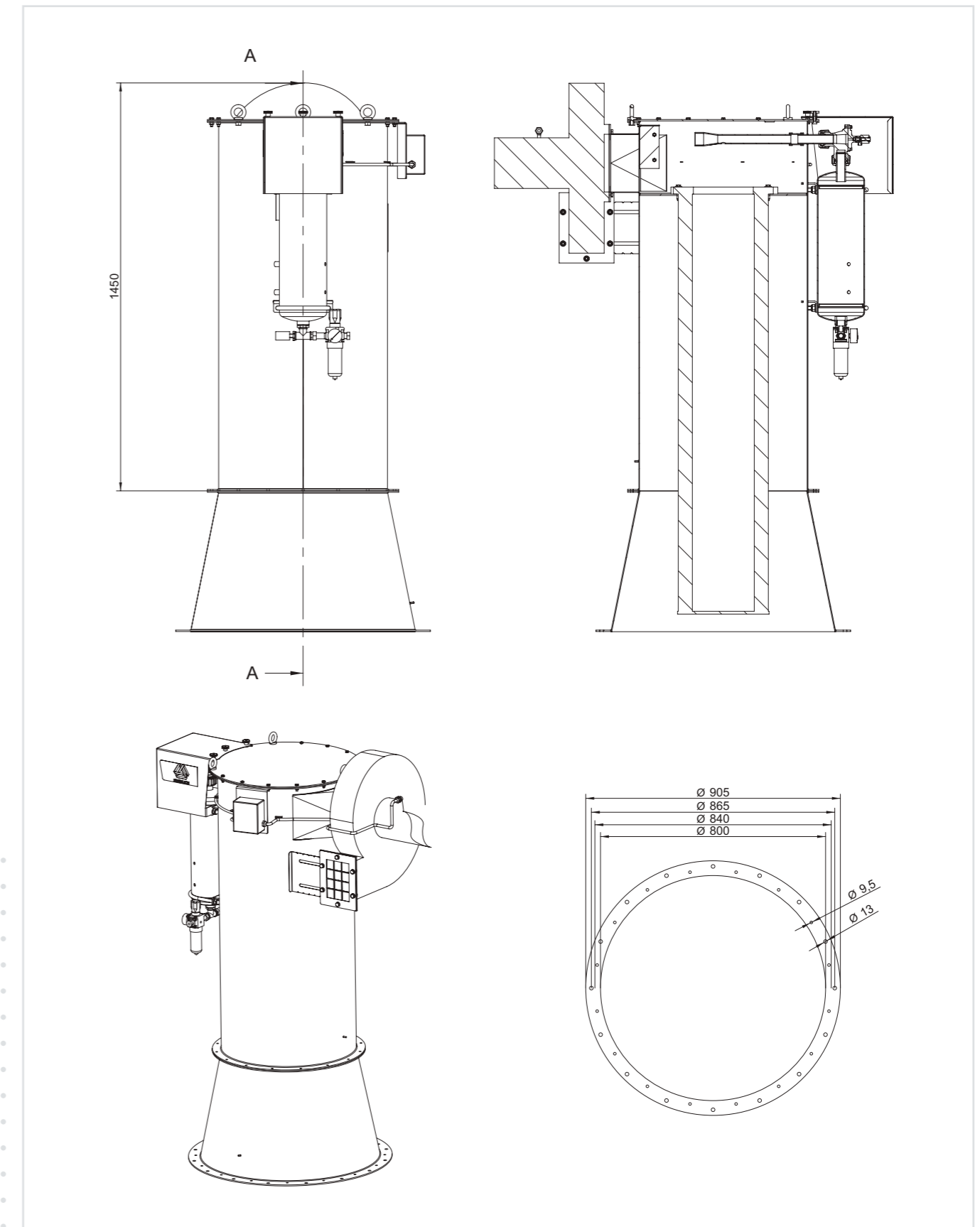
BENEFITS

- robust design
- easy filter element replacement
- low dust emission level
- excellent access to every filter component



Silo venting filter N1500 V is a cylindrically shaped dust collector. It is mainly used for dedusting of silos and for local filtration.

PLANNNS



office@siethomgroup.com

www.siethomgroup.com

DESCRIPTION

- filter N1500 V is a cylindrically shaped dust collector with support legs and dust container
- suitable for local dedusting (for example – big bags, welding operations etc.)

OPERATION QUALITIES

- air volume 1800 m³/h
- filtration area 24 m²
- fan 2,2 kW
- residual dust concentration at the output <10 mg/m³
- temperature resistance -20 °C / +80 °C
- compressed air needed 6 bar, consumption 6 Nm³/h
- pressure loss 1500 Pa
- weight: 278 kg

DESIGN

- carbon steel construction
- dust collector body diameter 600 mm
- filter element: 1 filter cartridge
- made of polyester in basic design
- diameter 325 mm, length 1500 mm
- air tank with JET-PULS filter cartridges recovery and timer
- compressed air inlet: internal thread G 1/2"
- electromagnetic valve (1 pc), safety valve (1 pc), pressure, regulator (1 pc)
- support legs with dust container

ADDITIONAL ACCESSORIES

- ATEX version
- non-standard temperature design -40 °C / +150 °C

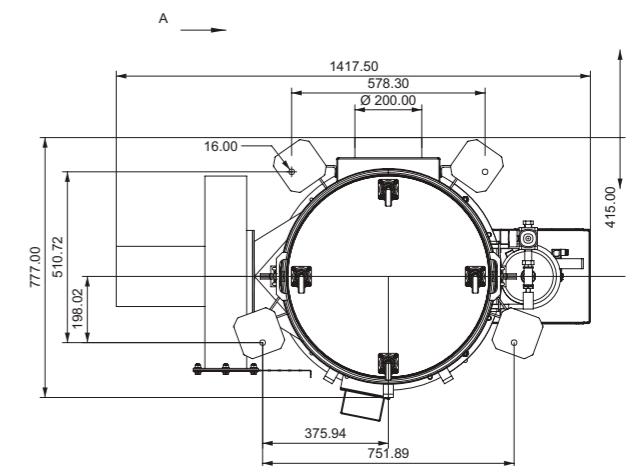
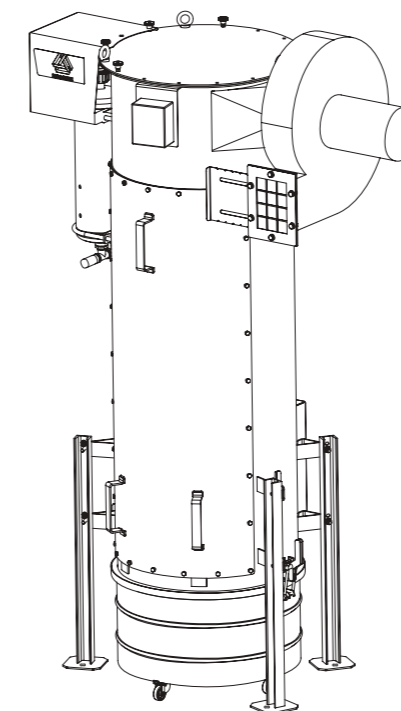
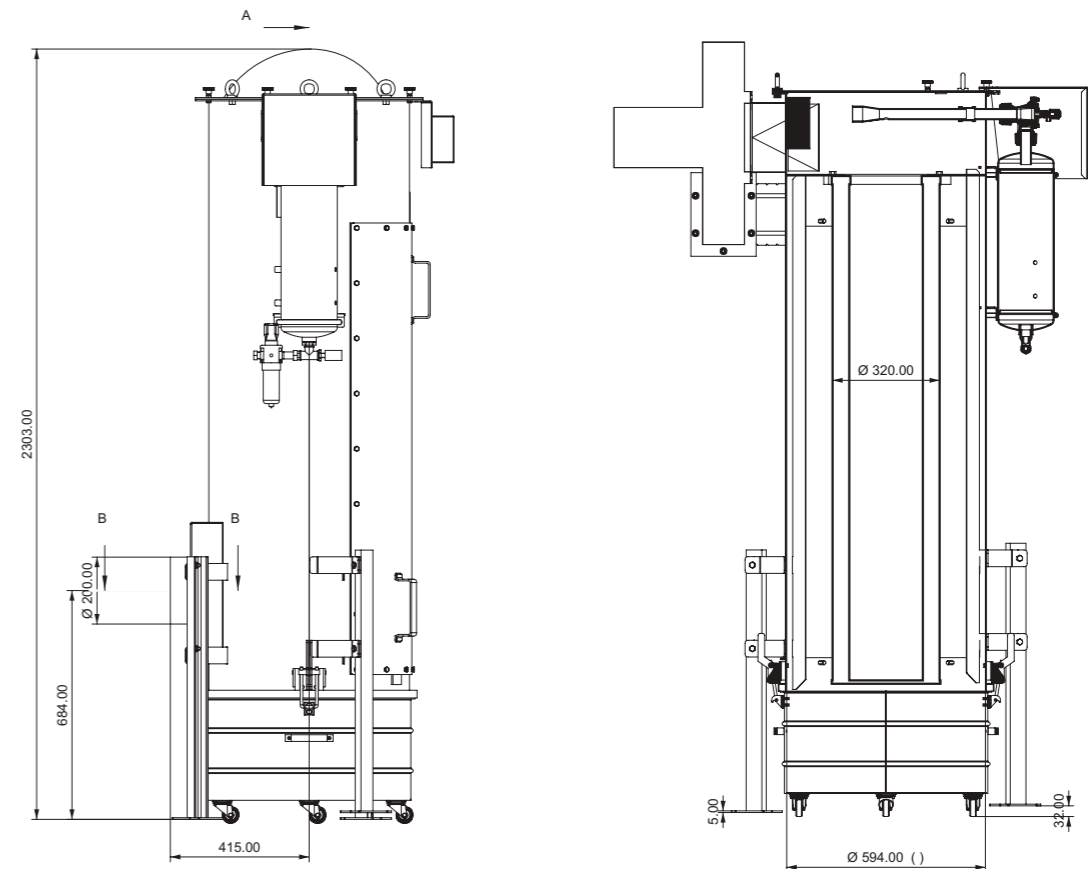
BENEFITS

- easy filter element replacement
- easy to move, install and transport
- excellent access to every filter component



Dust collector N1500 V/N is equipped with the support legs and the dust container. It is mainly used for local filtration.

PLANNNS



office@siethomgroup.com

www.siethomgroup.com

DESCRIPTION

- silo venting filter NH1000 V is a cylindrically shaped dustcollector with bags, ideal for silo dedusting

OPERATION QUALITIES

- air volume 1000 m³/h
- filtration area 4 m²
- fan 1,5 kW
- temperature resistance -20 °C / +80 °C
- compressed air needed 6 bar, consumption 6 Nm³/h
- pressure loss 1500 Pa
- weight: 155 kg

DESIGN

- carbon steel construction
- dust collector body diameter 696 mm
- filter element: 8 filterbags
- made of polyester in basic design
- diameter 144 mm, lenght 1020 mm
- air tank with JET-PULS filter bags recovery and timer
- compressed air inlet: internal thread G 1/2"
- electromagnetic valve (2 pcs), safety valve (1 pc), pressure, regulator (1 pc)

ADDITIONAL ACCESSORIES

- ATEX version
- non-standard temperature design -40 °C / +150 °C

BENEFITS

- easy filter element replacement
- easy to move, install and transport
- excellent access to every filter component



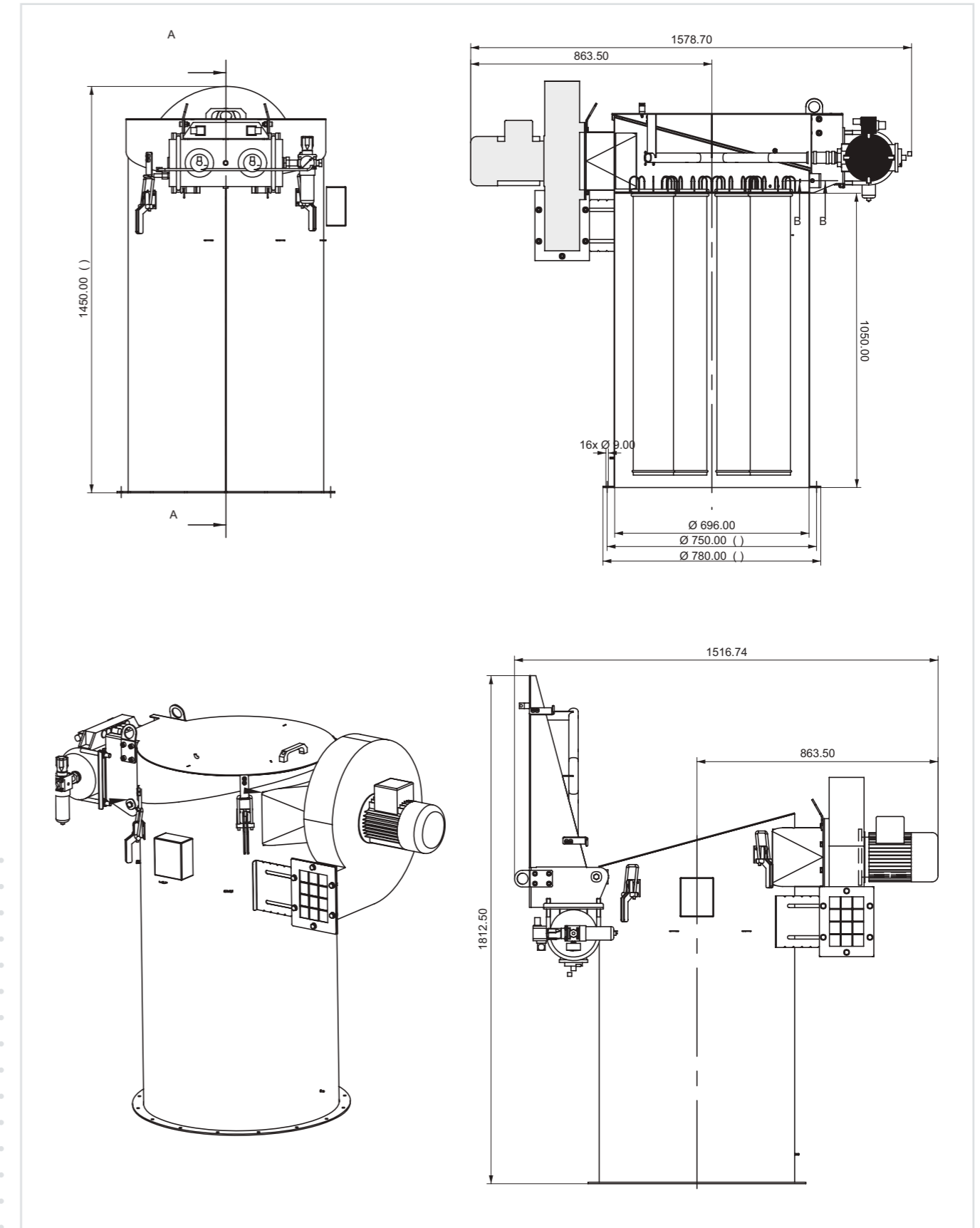
Silo venting filter NH1000 V is a cylindrically shaped dust collector. It is mainly used for dedusting of silos and for local filtration.



office@siethomgroup.com

www.siethomgroup.com

PLANNNS



DESCRIPTION

- box-shaped dust collector for dedusting of storage silos, belt conveyor transfer points, welding and cutting machines etc.

OPERATION QUALITIES

- air volume 1000 m³/h
- filtration area 17,8 m²
- fan 1,5 kW
- residual dust concentration at the output <10 mg/m³
- temperature resistance -20 °C / +80 °C
- compressed air needed 6 bar, consumption 6 Nm³/h
- pressure loss 1500 Pa
- weight: 195 kg

DESIGN

- carbon steel construction
- filter element: 9 filter cartridges
- made of polyester in basic design
- diameter 145 mm, length 600 mm
- air tank with JET-PULS filter cartridges recovery and timer
- compressed air inlet: internal thread G 1/2"
- electromagnetic valve (3 pcs), safety valve (1 pc), pressure regulator (1 pc)

ADDITIONAL ACCESSORIES

- electric control box: 3 x 400 V AC, 50 Hz
- dust container or rotary valve with support construction
- noise silencer
- non-standard temperature design -40 °C / +150 °C

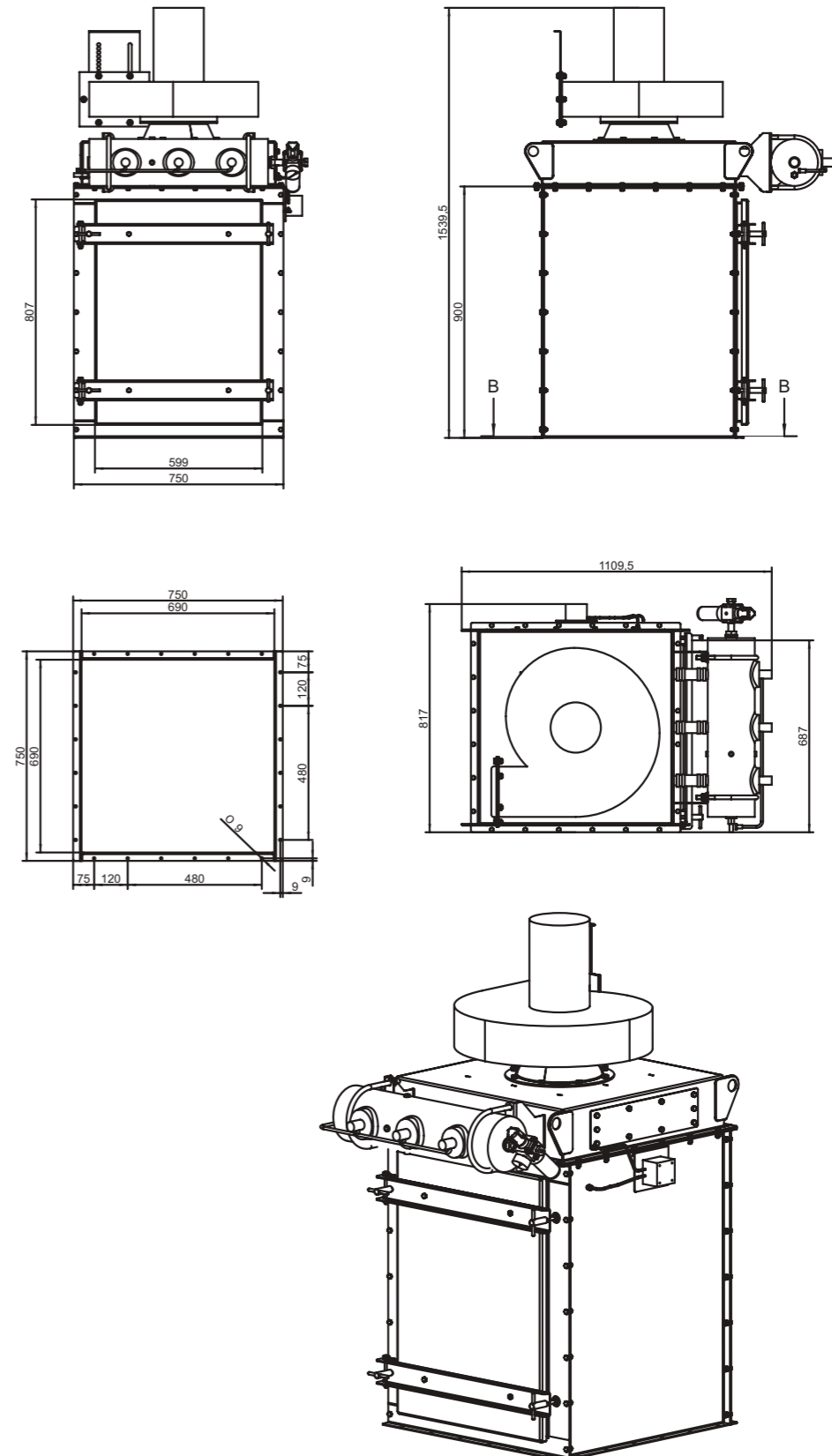
BENEFITS

- robust design
- easy filter element replacement
- low dust emission level
- excellent access to every filter component



Dust collector P0600 is a box-shaped device. It is used for local filtration - dedusting of storage silos, belt conveyor transfer points, welding operations etc.

PLANNNS



office@siethomgroup.com

www.siethomgroup.com

DESCRIPTION

- box-shaped dust collector for dedusting of storage silos, belt conveyor transfer points, welding and cutting machines etc.

OPERATION QUALITIES

- air volume 1800 m³/h
- filtration area 35,6 m²
- fan 2,2 kW
- residual dust concentration at the output <10 mg/m³
- temperature resistance -20 °C / +80 °C
- compressed air needed 6 bar, consumption 6 Nm³/h
- pressure loss 1500 Pa
- weight: 276 kg

DESIGN

- carbon steel construction
- filter element: 9 filter cartridges
- made of polyester in basic design
- diameter 145 mm, length 1200 mm
- air tank with JET-PULS filter cartridges recovery and timer
- pressure switch to indicate the filter cartridges are plugged
- compressed air inlet: internal thread G 1/2"
- electromagnetic valve (3 pcs), safety valve (1 pc), pressure, regulator (1 pc)

ADDITIONAL ACCESSORIES

- electric control box: 3 x 400 V AC, 50 Hz
- dust container or rotary valve with support construction
- noise silencer
- non-standard temperature design -40 °C / +150 °C

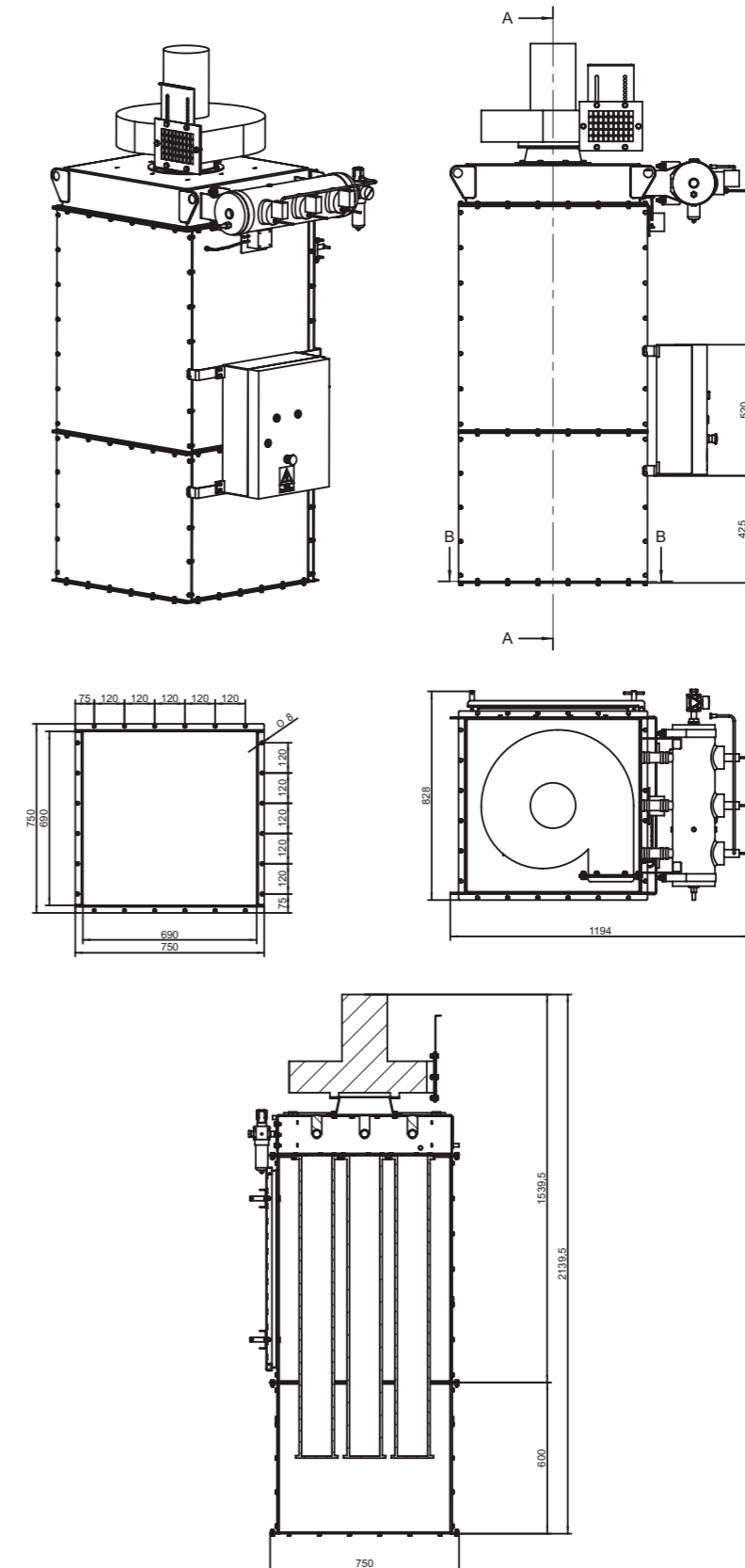
BENEFITS

- robust design
- easy filter element replacement
- low dust emission level
- excellent access to every filter component



Dust collector P1200 is a box-shaped device. It is used for local filtration - dedusting of storage silos, belt conveyor transfer points, welding operations etc.

PLANNNS



office@siethomgroup.com

www.siethomgroup.com

DESCRIPTION

- box-shaped dust collector in horizontal design is used for an effective dedusting belt conveyor transfer points

OPERATION QUALITIES

- air volume 1800 m³/h
- filtration area 35,6 m²
- fan 2,2 kW
- residual dust concentration at the output <10 mg/m³
- temperature resistance -20 °C / +80 °C
- compressed air needed 6 bar, consumption 6 Nm³/h
- pressure loss 1500 Pa
- weight: 294 kg

DESIGN

- carbon steel construction
- filter element: 9 filter cartridges
- made of polyester in basic design
- diameter 145 mm, length 1200 mm
- air tank with JET-PULS filter cartridges recovery and timer
- pressure switch to indicate the filter cartridges are plugged
- compressed air inlet: internal thread G 1/2"
- electromagnetic valve (3 pcs), safety valve (1 pc), pressure, regulator (1 pc)

ADDITIONAL ACCESSORIES

- electric control box: 3 x 400 V AC, 50 Hz
- ATEX version
- noise silencer
- non-standard temperature design -40 °C / +150 °C

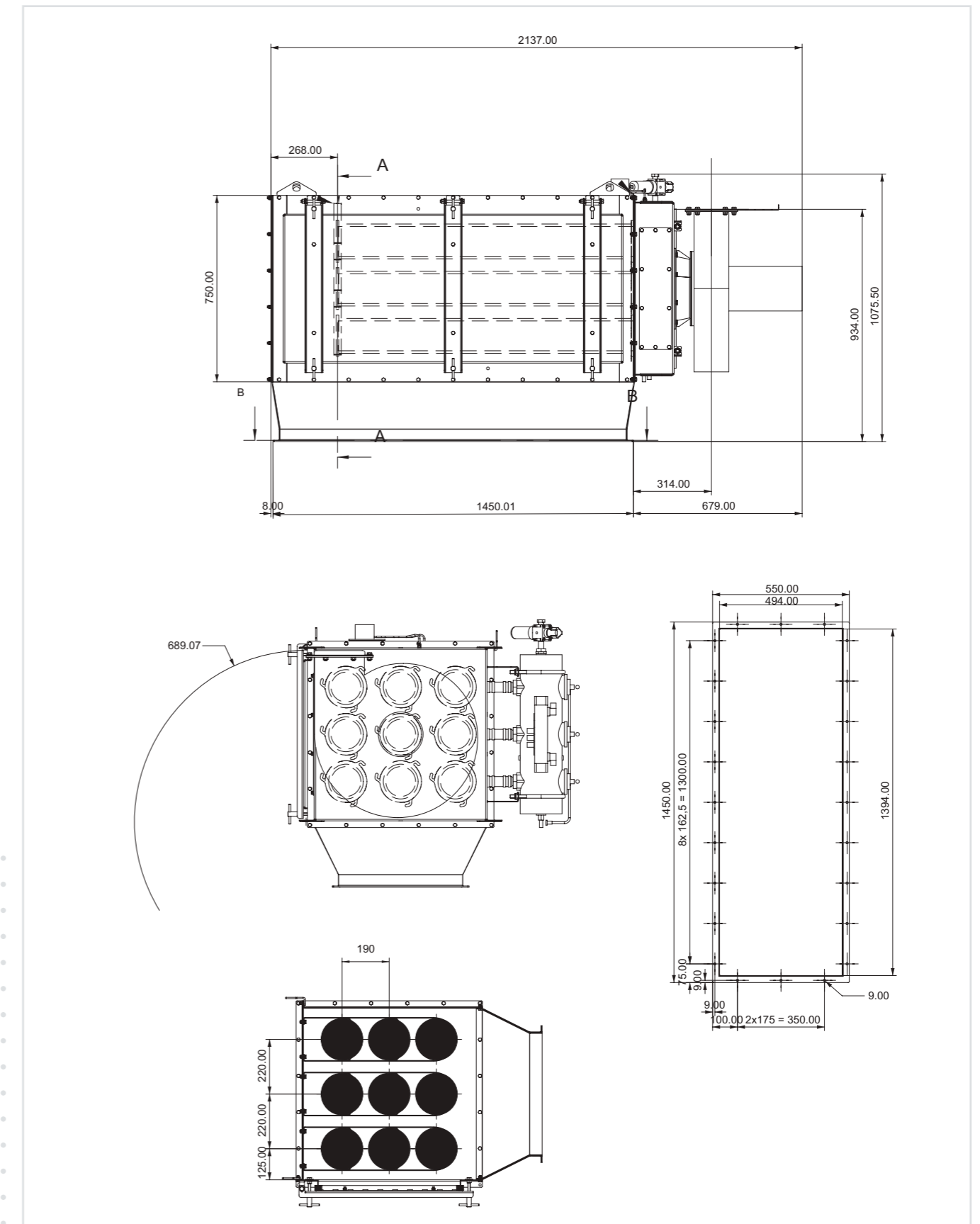
BENEFITS

- robust design
- easy filter element replacement
- easy to move, install and transport
- excellent access to every filter component



Dust collector P1200/9/H is used for the dedusting of belt conveyor transfer points or bucket elevators.

PLANNNS



office@siethomgroup.com

www.siethomgroup.com

DESCRIPTION

- box-shaped dust collector for dedusting of storage silos or belt conveyor transfer points

OPERATION QUALITIES

- filtration area 44,5 m²
- residual dust concentration at the output <10 mg/m³
- temperature resistance -20 °C / +80 °C
- compressed air needed 6 bar, consumption 6 Nm³/h
- pressure loss 1500 Pa

DESIGN

- carbon steel construction
- filter element: 9 filter cartridges
- made of polyester in basic design
- diameter 145 mm, length 1500 mm
- air tank with JET-PULS filter cartridges recovery and timer
- pressure switch to indicate the filter cartridges are plugged
- electromagnetic valve (3 pcs), safety valve (1 pc), pressure, regulator (1 pc)

ADDITIONAL ACCESSORIES

- electric control box: 3 x 400 V AC, 50 Hz
- dust container or rotary valve with support construction
- noise silencer
- non-standard temperature design -40 °C / +150 °C

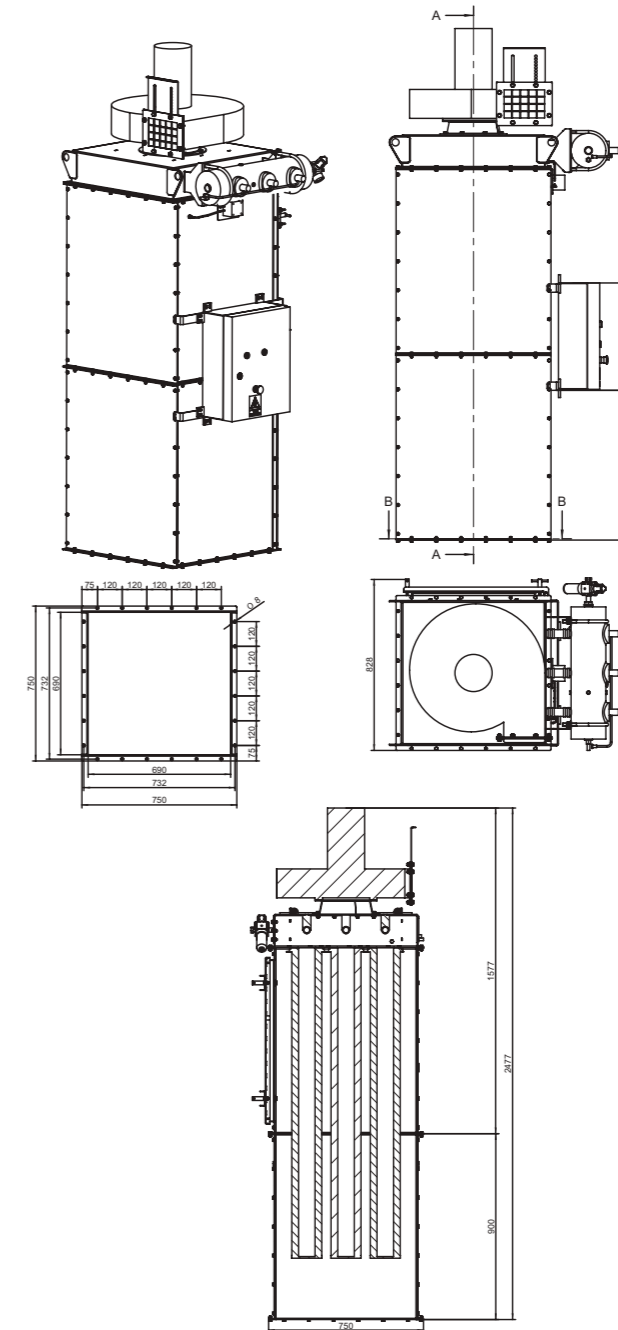
BENEFITS

- robust design
- easy filter element replacement
- low dust emission level
- excellent access to every filter component



Dust collector P1500 is a box-shaped device. It is used for local filtration - dedusting of storage silos, belt conveyor transfer points, etc.

PLANNS



| Air volume (m ³ /h) | Fan (kW) | Fan underpressure (Pa) | Weight (kg) |
|--------------------------------|----------|------------------------|-------------|
| 2 700 | 3,0 | 2750 | 327 |
| 2 700-3 400 | 4,0 | 2900 | 329 |
| 3 400-4 800 | 5,5 | 3000 | 354 |



office@siethomgroup.com

www.siethomgroup.com

DESCRIPTION

- box-shaped dust collector in horizontal design is used for an effective dedusting belt conveyor transfer points

OPERATION QUALITIES

- filtration area 44,5 m²
- residual dust concentration at the output <10 mg/m³
- temperature resistance -20 °C / +80 °C
- compressed air needed 6 bar, consumption 6 Nm³/h
- pressure loss 1500 Pa

DESIGN

- carbon steel construction
- filter element: 9 filter cartridges
- made of polyester in basic design
- diameter 145 mm, length 1500 mm
- air tank with JET-PULS filter cartridges recovery and timer
- pressure switch to indicate the filter cartridges are plugged
- electromagnetic valve (3 pcs), safety valve (1 pc), pressure, regulator (1 pc)

ADDITIONAL ACCESSORIES

- electric control box: 3 x 400 V AC, 50 Hz
- ATEX version
- noise silencer
- non-standard temperature design -40 °C / +150 °C

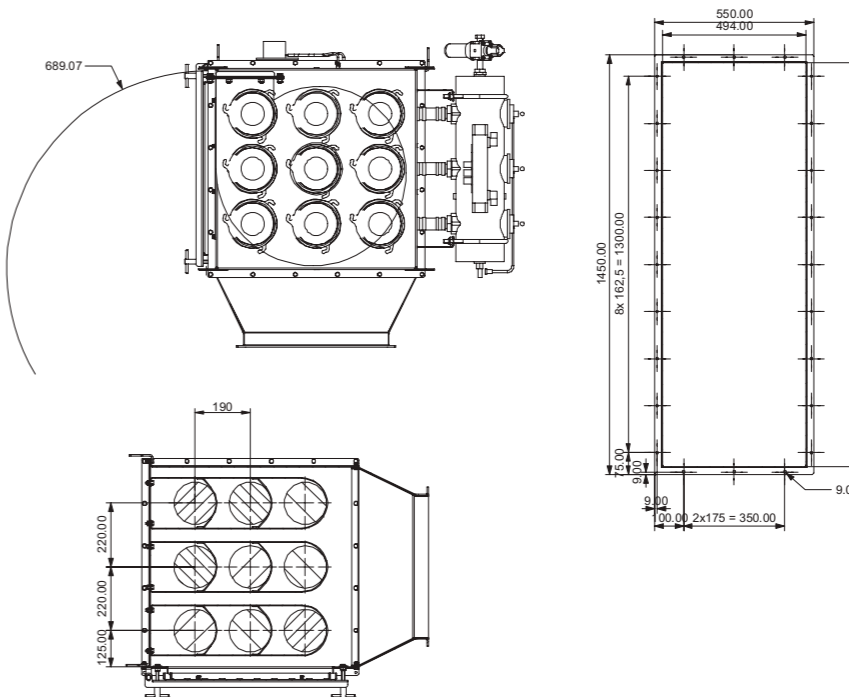
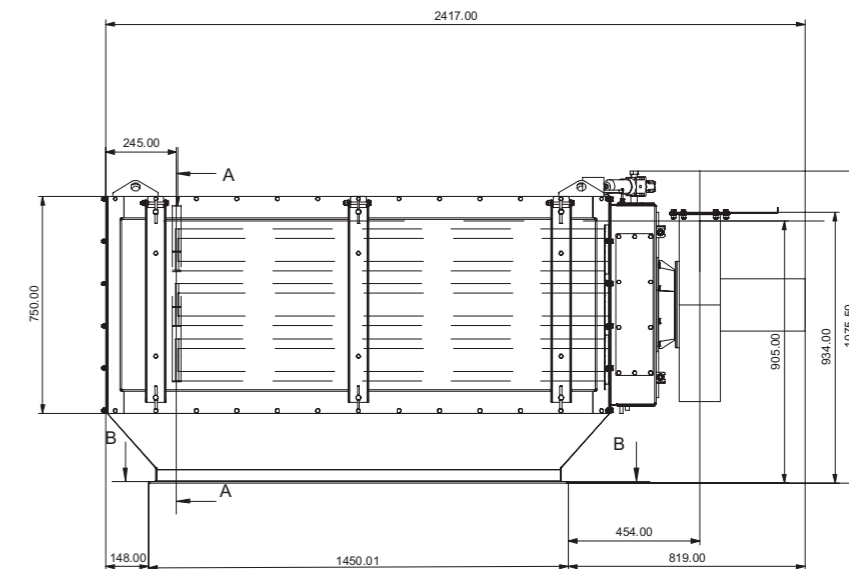
BENEFITS

- robust design
- easy filter element replacement
- easy to move, install and transport
- excellent access to every filter component



Dust collector P1500/9/H is used for the dedusting of belt conveyor transfer points or bucket elevators.

PLANNINGS



| Air volume (m ³ /h) | Fan (kW) | Fan underpressure (Pa) | Weight (kg) |
|--------------------------------|----------|------------------------|-------------|
| 2 700 | 3,0 | 2750 | 314 |
| 2 700-3 400 | 4,0 | 2900 | 317 |
| 3 400-4 800 | 5,5 | 3000 | 319 |



office@siethomgroup.com

www.siethomgroup.com

DESCRIPTION

- stand alone box-shaped dust collector with support legs, hopper and rotary valve

OPERATION QUALITIES

- filtration area 44,5 m²
- residual dust concentration at the output <10 mg/m³
- temperature resistance -20 °C / +80 °C
- compressed air needed 6 bar, consumption 6 Nm³/h
- pressure loss 1500 Pa

DESIGN

- carbon steel construction
- filter element: 9 filter cartridges
- made of polyester in basic design
- diameter 145 mm, length 1500 mm
- air tank with JET-PULS filter cartridges recovery and timer
- compressed air inlet: internal thread G 1/2"
- pressure switch to indicate the filter cartridges are plugged
- electromagnetic valve (3 pcs), safety valve (1 pc), pressure, regulator (1 pc)
- support legs with hopper
- rotary valve 250 x 250, 0.55 kW

ADDITIONAL ACCESSORIES

- electric control box: 3 x 400 V AC, 50 Hz
- ATEX version
- noise silencer
- non-standard temperature design -40 °C / +150 °C

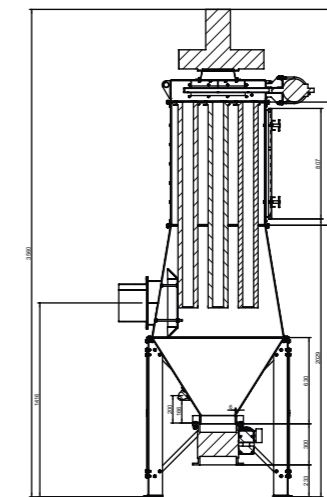
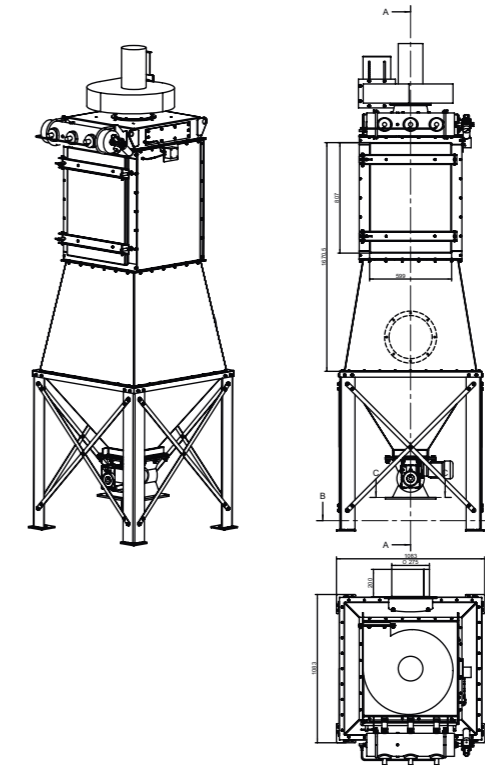
BENEFITS

- robust design
- easy filter element replacement
- easy to move, install and transport
- excellent access to every filter component



Dust collector P1500/9/R is a box-shaped device. It is used for local filtration – dedusting of storage silos, belt conveyor transfer points, welding operations etc. It is equipped with the support legs, dust hopper and rotary valve.

PLANNNS



| Air volume (m ³ /h) | Fan (kW) | Fan underpressure (Pa) | Weight (kg) |
|--------------------------------|----------|------------------------|-------------|
| 2 700 | 3,0 | 2750 | 519 |
| 2 700-3 400 | 4,0 | 2900 | 565 |
| 3 400-4 800 | 5,5 | 3000 | 571 |



office@siethomgroup.com

www.siethomgroup.com

DESCRIPTION

- stand alone box-shaped dust collector with support legs, hopper and dust container

OPERATION QUALITIES

- filtration area 44,5 m²
- residual dust concentration at the output <10 mg/m³
- temperature resistance -20 °C / +80 °C
- compressed air needed 6 bar, consumption 6 Nm³/h
- pressure loss 1500 Pa

DESIGN

- carbon steel construction
- filter element: 9 filter cartridges
- made of polyester in basic design
- diameter 145 mm, length 1500 mm
- air tank with JET-PULS filter cartridges recovery and timer
- compressed air inlet: internal thread G 1/2"
- pressure switch to indicate the filter cartridges are plugged
- electromagnetic valve (3 pcs), safety valve (1 pc), pressure, regulator (1 pc)
- support legs with hopper
- dust container

ADDITIONAL ACCESSORIES

- electric control box: 3 x 400 V AC, 50 Hz
- ATEX version
- noise silencer
- non-standard temperature design -40 °C / +150 °C

BENEFITS

- robust design
- easy filter element replacement
- easy to move, install and transport
- excellent access to every filter component



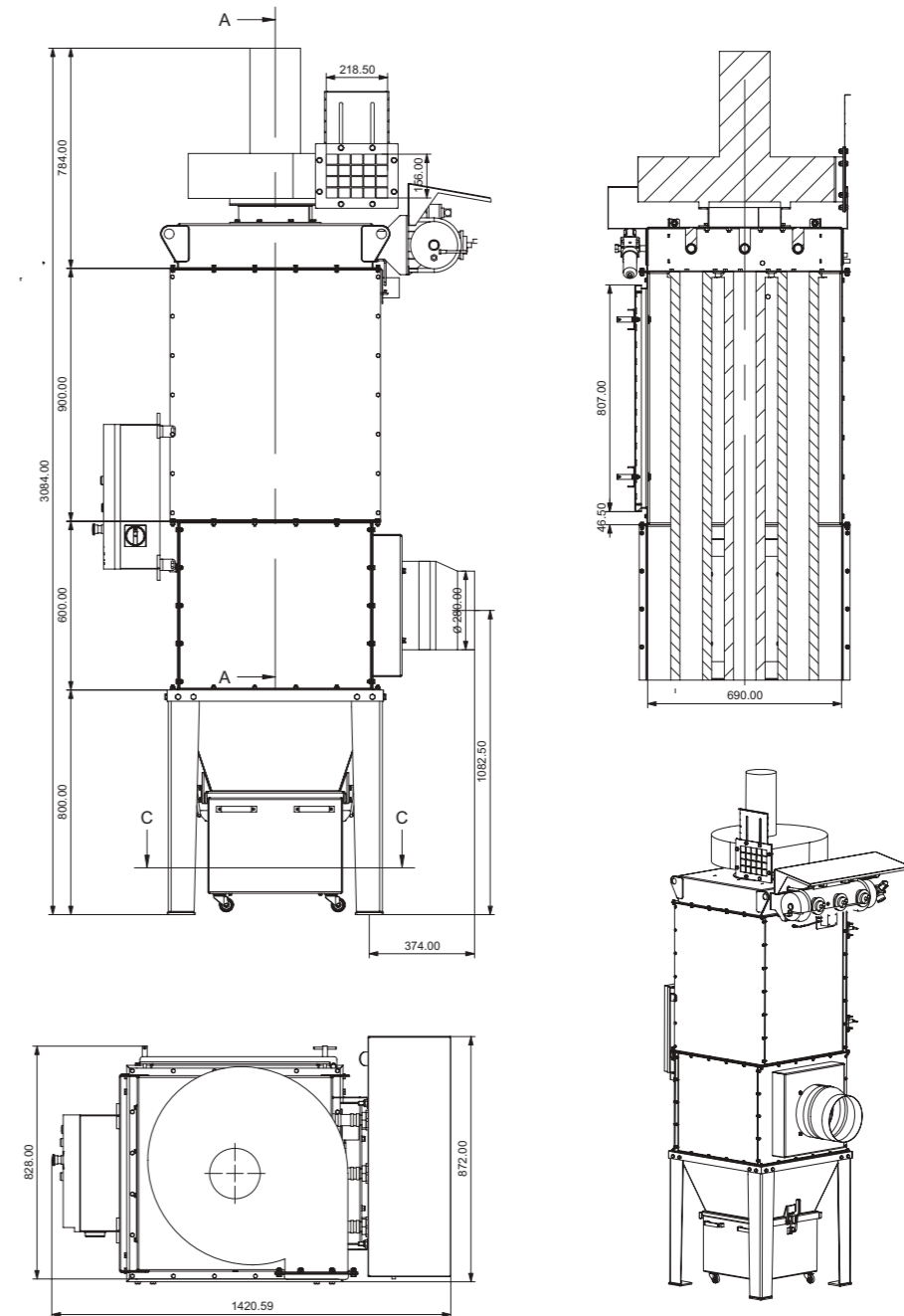
Dust collector P1500/9/N is a box-shaped device. It is mainly used for local filtration - aspiration from welding or brushing operations, CNC cutting etc. It is equipped with the support legs, hopper and dust container.



office@siethomgroup.com

www.siethomgroup.com

PLANNNS



| Air volume (m ³ /h) | Fan (kW) | Fan underpressure (Pa) | Weight (kg) |
|--------------------------------|----------|------------------------|-------------|
| 2 700 | 3,0 | 2750 | 400 |
| 2 700-3 400 | 4,0 | 2900 | 425 |
| 3 400-4 800 | 5,5 | 3000 | 432 |

DESCRIPTION

- stand alone box-shaped dust collector with support legs, hopper and rotary valve

OPERATION QUALITIES

- air volume max. 5 400 m³/h
- filtration area 59,0 m²
- fan 7.5 kW
- residual dust concentration at the output <10 mg/m³
- temperature resistance -20 °C / +80 °C
- compressed air needed 6 bar, consumption 6 Nm³/h
- pressure loss 1500 Pa
- weight 624 kg

DESIGN

- carbon steel construction
- filter element: 12 filter cartridges
- made of polyester in basic design
- diameter 145 mm, length 1500 mm
- air tank with JET-PULS filter cartridges recovery and timer
- compressed air inlet: internal thread G 1/2"
- pressure switch to indicate the filter cartridges are plugged
- electromagnetic valve (4 pcs), safety valve (1 pc), pressure regulator (1 pc)
- support legs with hopper
- rotary valve 250 x 250, 0.55 kW

ADDITIONAL ACCESSORIES

- electric control box: 3 x 400 V AC, 50 Hz
- ATEX version
- noise silencer
- non-standard temperature design -40 °C / +150 °C

BENEFITS

- robust design
- easy filter element replacement
- easy to move, install and transport
- excellent access to every filter component



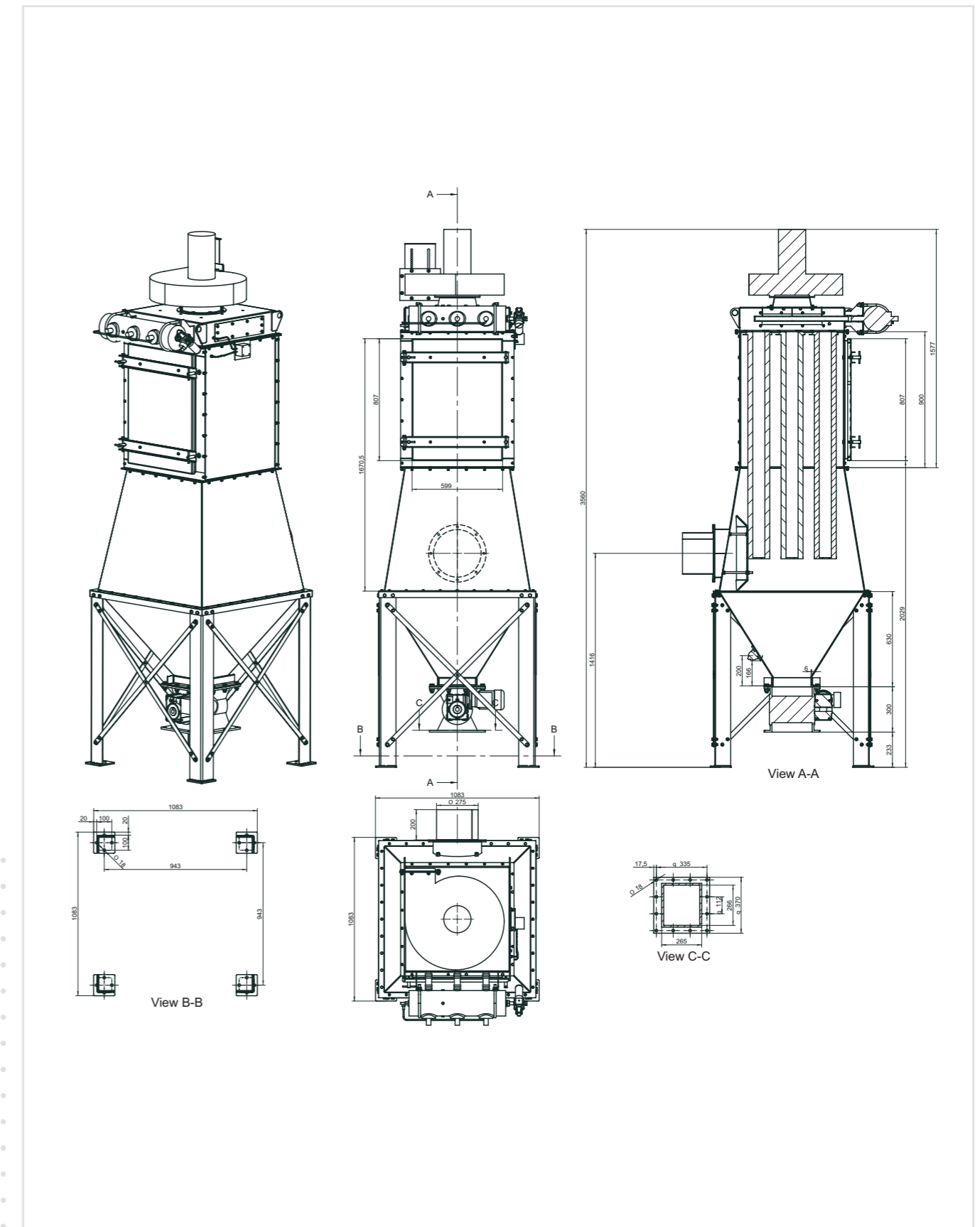
Dust collector P1500/12/R is a box-shaped device. It is used for local filtration - dedusting of storage silos, belt conveyor transfer points, welding operations etc. It is equipped with the support legs, dust hopper and rotary valve. and dust container.etc. It is equipped with the support legs, dust hopper and rotary valve.



office@siethomgroup.com

www.siethomgroup.com

PLANNINGS



DESCRIPTION

- stand alone box-shaped dust collector with support legs, hopper and dust container

OPERATION QUALITIES

- air volume max. 5 400 m³/h
- filtration area 59,0 m²
- fan 7.5 kW
- residual dust concentration at the output <10 mg/m³
- temperature resistance -20 °C / +80 °C
- compressed air needed 6 bar, consumption 6 Nm³/h
- pressure loss 1500 Pa
- weight 617 kg

DESIGN

- carbon steel construction
- filter element: 12 filter cartridges
- made of polyester in basic design
- diameter 145 mm, length 1500 mm
- air tank with JET-PULS filter cartridges recovery and timer
- compressed air inlet: internal thread G 1/2"
- pressure switch to indicate the filter cartridges are plugged
- electromagnetic valve (4 pcs), safety valve (1 pc), pressure regulator (1 pc)
- support legs with hopper
- dust container

ADDITIONAL ACCESSORIES

- electric control box: 3 x 400 V AC, 50 Hz
- ATEX version
- noise silencer
- non-standard temperature design -40 °C / +150 °C

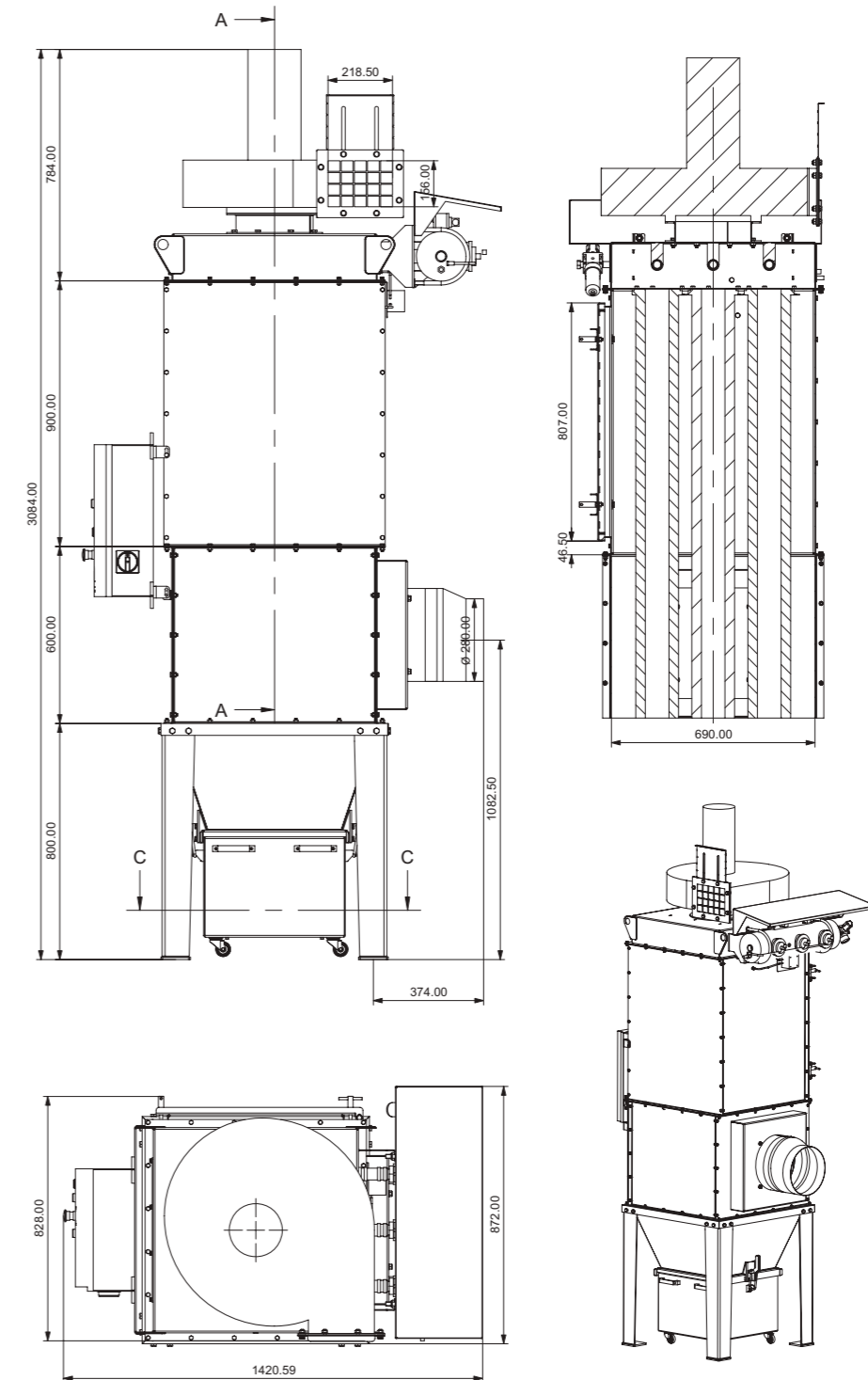
BENEFITS

- robust design
- easy filter element replacement
- easy to move, install and transport
- excellent access to every filter component



Dust collector P1500/12/N is a box-shaped device. It is mainly used for local filtration - aspiration from welding or brushing operations, CNC cutting etc. It is equipped with the support legs, hopper and dust container.

PLANNNS



office@siethomgroup.com

www.siethomgroup.com

DESCRIPTION

- box-shaped dust collector in horizontal design is used for an effective dedusting belt conveyor transfer points

OPERATION QUALITIES

- air volume 5400 m³/h
- filtration area 59,0 m²
- fan: 7,5 kW
- residual dust concentration at the output <10 mg/m³
- temperature resistance -20 °C / +80 °C
- compressed air needed 6 bar, consumption 6 Nm³/h
- pressure loss 1500 Pa
- weight: 456 kg

DESIGN

- carbon steel construction
- filter element: 12x filter cartridge
- made of polyester in basic design
- diameter 145 mm, length 1500 mm
- air tank with JET-PULS filter cartridges recovery and timer
- compressed air inlet: internal thread G 1/2"
- pressure switch to indicate the filter cartridges are plugged
- electromagnetic valve (4 pcs), safety valve (1 pc), pressure, regulator (1 pc)

ADDITIONAL ACCESSORIES

- electric control box: 3 x 400 V AC, 50 Hz
- ATEX version
- noise silencer
- non-standard temperature design -40 °C / +150 °C

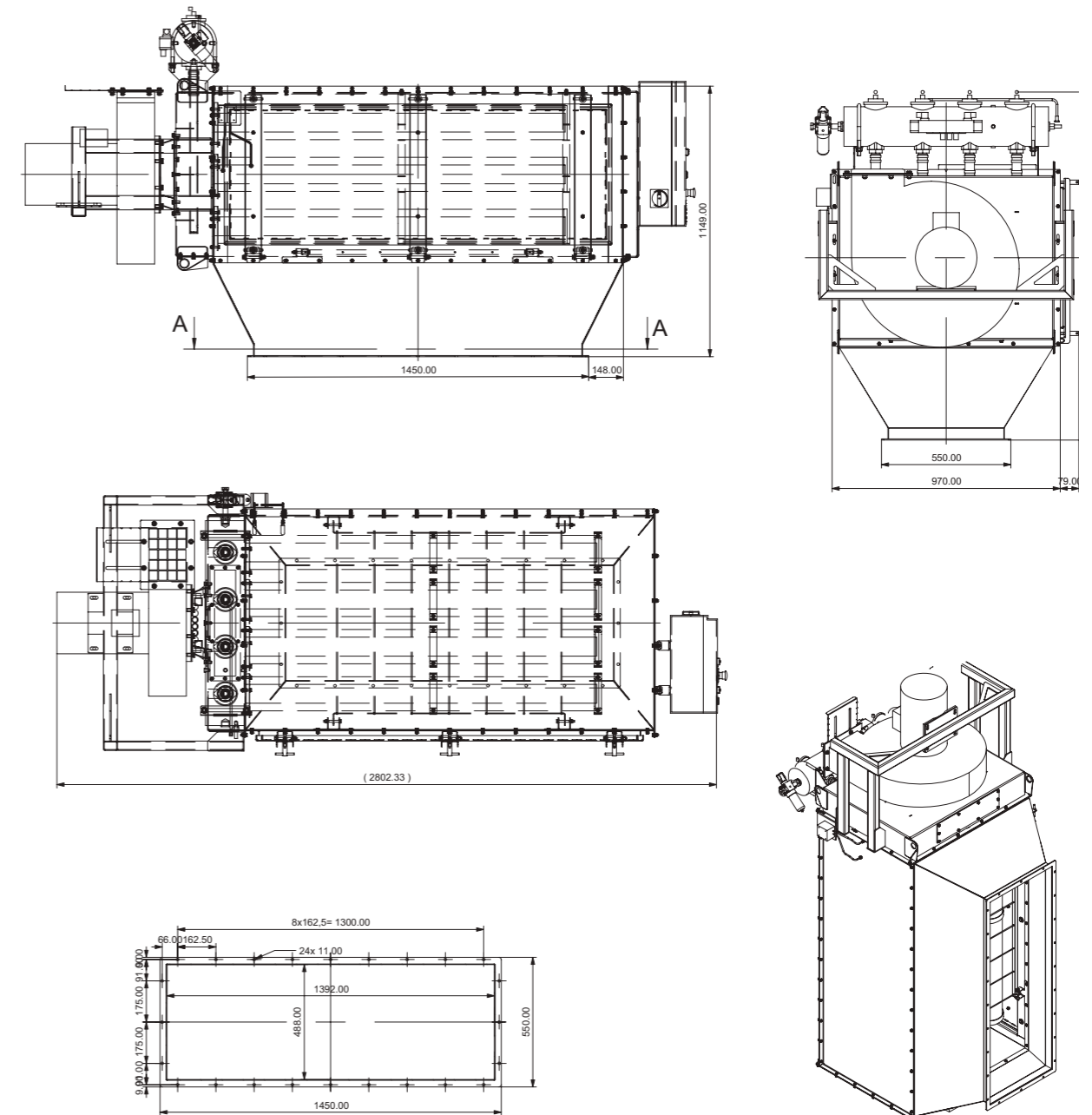
BENEFITS

- robust design
- easy filter element replacement
- easy to move, install and transport
- excellent access to every filter component



Dust collector P1500/12/H is used for the dedusting of belt conveyor transfer points or bucket elevators.

PLANNNS



office@siethomgroup.com

www.siethomgroup.com

DESCRIPTION

- stand alone box-shaped dust collector with support legs, hopper and rotary valve

OPERATION QUALITIES

- air volume max. 5 500 m³/h
- filtration area 63,0 m²
- fan: 11,0 kW
- residual dust concentration at the output <10 mg/m³
- temperature resistance -20 °C / +80 °C
- compressed air needed 6 bar, consumption 6 Nm³/h
- pressure loss 1500 Pa
- weight: 726 kg

DESIGN

- carbon steel construction
- filter element: 16 filter cartridges
- made of polyester in basic design
- diameter 145 mm, length 1200 mm
- air tank with JET-PULS filter cartridges recovery and timer
- compressed air inlet: internal thread G 1/2"
- pressure switch to indicate the filter cartridges are plugged
- electromagnetic valve (4 pcs), safety valve (1 pc), pressure, regulator (1 pc)
- support legs with hopper
- rotary valve 250 x 250, 0.55 kW

ADDITIONAL ACCESSORIES

- electric control box: 3 x 400 V AC, 50 Hz
- ATEX version
- noise silencer
- non-standard temperature design -40 °C / +150 °C

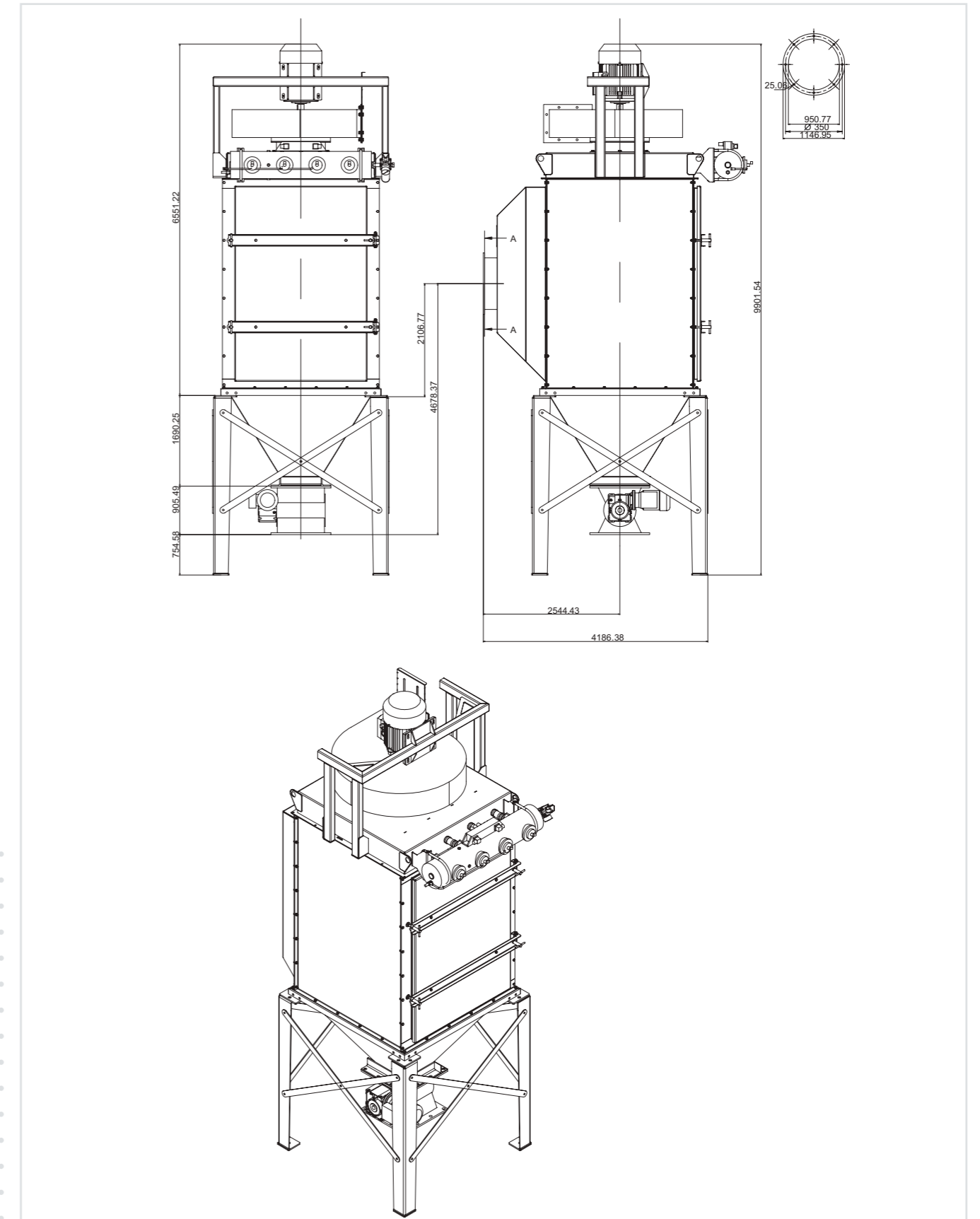
BENEFITS

- robust design
- easy filter element replacement
- easy to move, install and transport
- excellent access to every filter component



Dust collector P1200/16/R is a box-shaped device. It is used for local filtration – dedusting of storage silos, belt conveyor transfer points, welding operations etc. It is equipped with the support legs, dust hopper and rotary valve.

PLANNNS



office@siethomgroup.com

www.siethomgroup.com

DESCRIPTION

- stand alone box-shaped dust collector with support legs, hopper and rotary valve

OPERATION QUALITIES

- air volume max. 6 500 m³/h
- filtration area 99,0 m²
- fan: 11,0 kW
- residual dust concentration at the output <10 mg/m³
- temperature resistance -20 °C / +80 °C
- compressed air needed 6 bar, consumption 6 Nm³/h
- pressure loss 1500 Pa
- weight: 850 kg

DESIGN

- carbon steel construction
- filter element: 25 filter cartridges
- made of polyester in basic design
- diameter 145 mm, length 1200 mm
- air tank with JET-PULS filter cartridges recovery and timer
- compressed air inlet: internal thread G 1/2"
- pressure switch to indicate the filter cartridges are plugged
- electromagnetic valve (5 pcs), safety valve (1 pc), pressure regulator (1 pc)
- support legs with hopper
- rotary valve 250 x 250, 0.55 kW

ADDITIONAL ACCESSORIES

- electric control box: 3 x 400 V AC, 50 Hz
- ATEX version
- noise silencer
- non-standard temperature design -40 °C / +150 °C

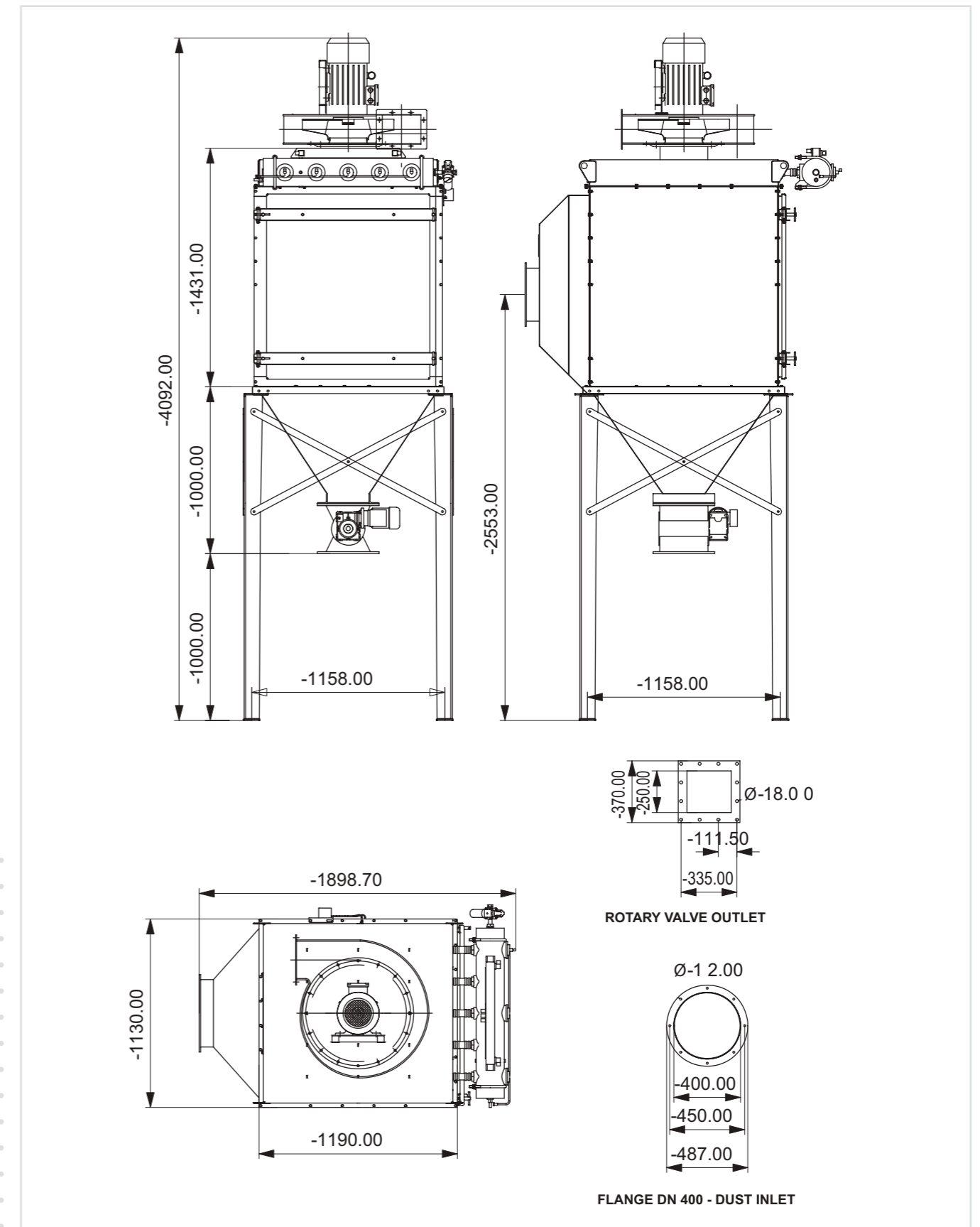
BENEFITS

- robust design
- easy filter element replacement
- easy to move, install and transport
- excellent access to every filter component



Dust collector P1200/25/R is a box-shaped device. It is used for local filtration - dedusting of storage silos, belt conveyor transfer points, welding operations etc. It is equipped with the support legs, dust hopper and rotary valve.

PLANNNS



office@siethomgroup.com

www.siethomgroup.com

DESCRIPTION

- stand alone box-shaped dust collector with support legs, hopper and dust container

OPERATION QUALITIES

- air volume max. 6 500 m³/h
- filtration area 99,0 m²
- fan: 11,0 kW
- residual dust concentration at the output <10 mg/m³
- temperature resistance -20 °C / +80 °C
- compressed air needed 6 bar, consumption 6 Nm³/h
- pressure loss 1500 Pa
- weight: 820 kg

DESIGN

- carbon steel construction
- filter element: 25 filter cartridges
- made of polyester in basic design
- diameter 145 mm, length 1200 mm
- air tank with JET-PULS filter cartridges recovery and timer
- compressed air inlet: internal thread G 1/2"
- pressure switch to indicate the filter cartridges are plugged
- electromagnetic valve (5 pcs), safety valve (1 pc), pressure regulator (1 pc)
- support legs with hopper
- dust container

ADDITIONAL ACCESSORIES

- electric control box: 3 x 400 V AC, 50 Hz
- ATEX version
- noise silencer
- non-standard temperature design -40 °C / +150 °C

BENEFITS

- robust design
- easy filter element replacement
- easy to move, install and transport
- excellent access to every filter component



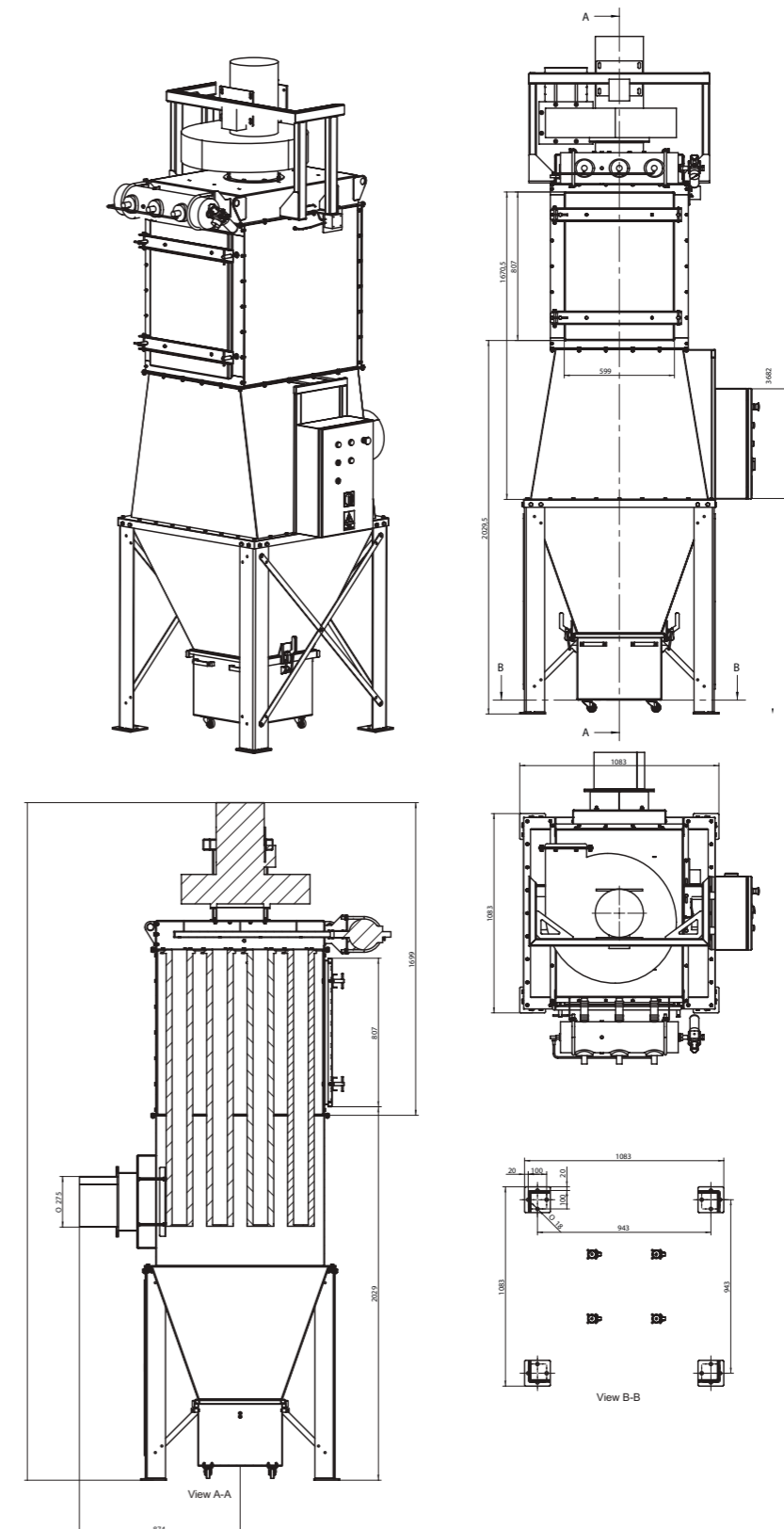
Dust collector P1200/25/N is a box-shaped device. It is mainly used for local filtration – aspiration from welding or brushing operations, CNC cutting etc. It is equipped with the support legs, hopper and dust container.



office@siethomgroup.com

www.siethomgroup.com

PLANNNS



DESCRIPTION

- one-box shaped dust collector for local or central filtration
- suitable for various industrial areas with non-stop operation (energy, building industry, foundries, welding, chemical and food industry etc.)

OPERATION QUALITIES

- air volume 3 800 - 5 940 m³/h
- filtration area 89 m²
- residual dust concentration at the output <10 mg/m³
- temperature resistance -20 °C / +80 °C
- compressed air needed 6 bar, consumption 6 Nm³/h
- pressure loss 1500 Pa

DESIGN

- 1 filter box made of carbon steel
- damping chamber to reduce the noise from the fan
- filter element: 18 filter cartridges
- made of polyester in basic design
- diameter 156 mm, length 1500 mm
- air tank with JET-PULS filter cartridges recovery and timer
- compressed air inlet: internal thread G 1/2"
- pressure switch to indicate the filter cartridges are plugged
- electromagnetic valve (3 pcs), safety valve (1 pc), pressure regulator (1 pc)
- support legs with hopper

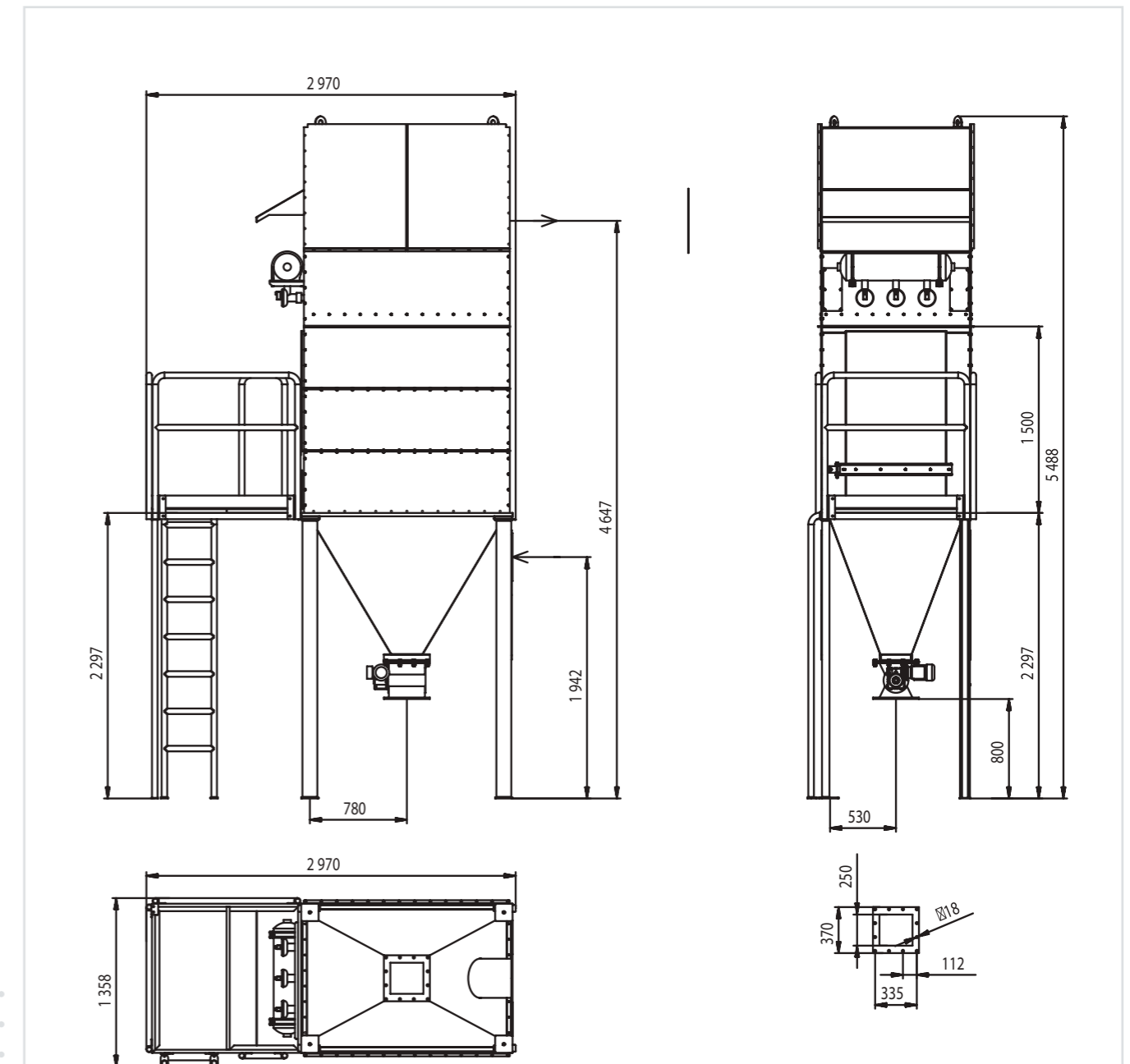
ADDITIONAL ACCESSORIES

- rotary valve or dust container
- ATEX version
- service platform for easy maintenance
- non-standard temperature design -40 °C / +150 °C



Dust collector M1500-1-18 is a one box-shaped device. It is used for local or central filtration in various industrial areas with non-stop operation. It is equipped with the built-in fan and hopper with support legs.

PLANS



| Air volume (m ³ /h) | Fan (kW) | Fan underpressure (Pa) | Filter surface load (m ³ /m ² /min) |
|--------------------------------|----------|------------------------|-----------------------------------------------------------|
| 3 800 | 5,5 | 3 950 | 0,90 |
| 3 800-4 800 | 7,5 | 3 950 | 1,12 |
| 4 800-5 940 | 9,2 | 4 200 | 1,39 |



office@siethomgroup.com

www.siethomgroup.com

DESCRIPTION

- one-box shaped dust collector for local or central filtration
- suitable for various industrial areas with non-stop operation (energy, building industry, foundries, welding, chemical and food industry etc.)

OPERATION QUALITIES

- air volume 5 100 - 8 240 m³/h
- filtration area 118 m²
- residual dust concentration at the output <10 mg/m³
- temperature resistance -20 °C / +80 °C
- compressed air needed 6 bar, consumption 6-8 Nm³/h
- pressure loss 1500 Pa

DESIGN

- 1 filter box made of carbon steel
- damping chamber to reduce the noise from the fan
- filter element: 24 filter cartridges
- made of polyester in basic design
- diameter 156 mm, length 1500 mm
- air tank with JET-PULS filter cartridges recovery and timer
- compressed air inlet: internal thread G 1/2"
- pressure switch to indicate the filter cartridges are plugged
- electromagnetic valve (4 pcs), safety valve (1 pc), pressure regulator (1 pc)
- support legs with hopper

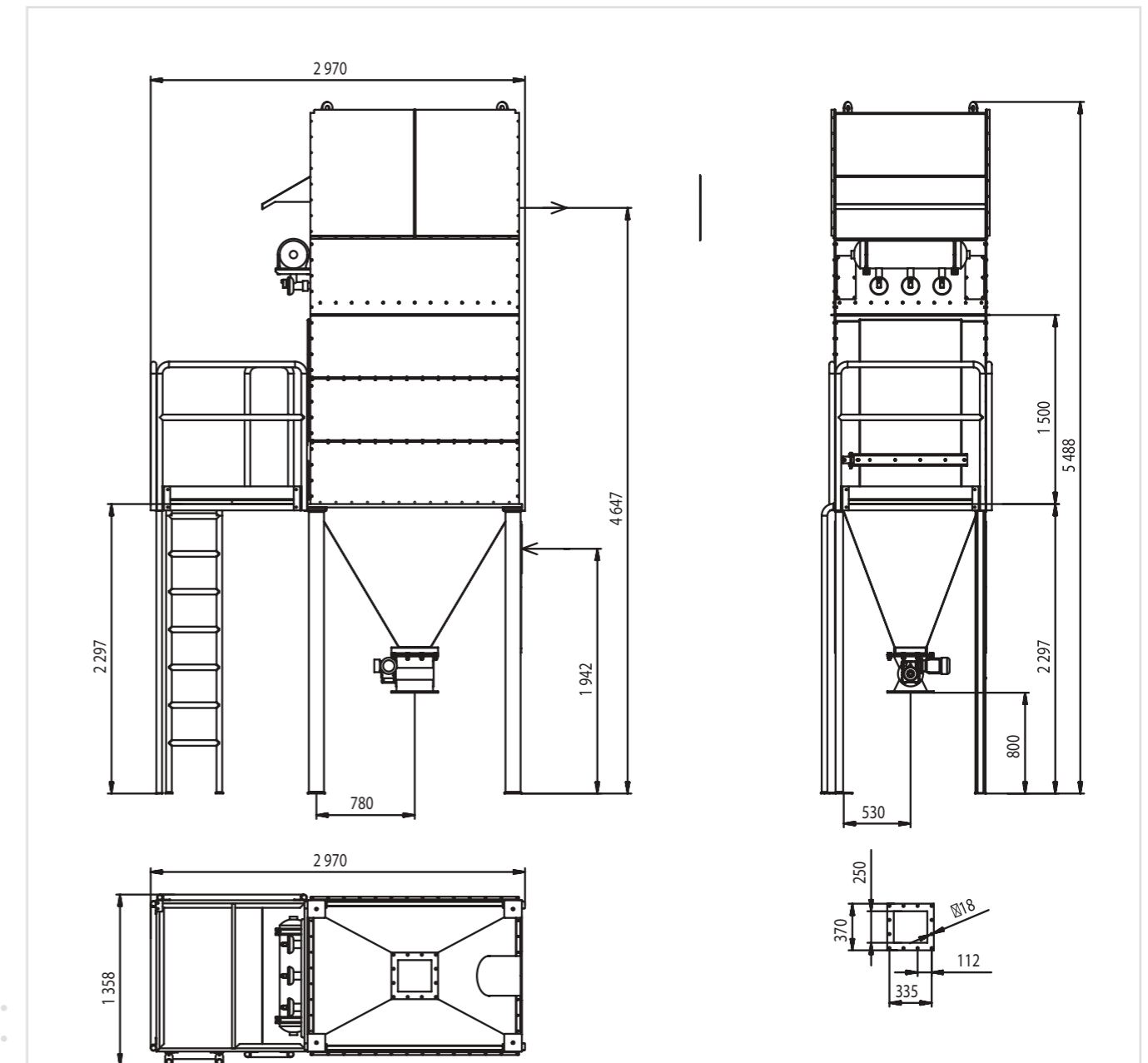
ADDITIONAL ACCESSORIES

- rotary valve or dust container
- ATEX version
- service platform for easy maintenance
- non-standard temperature design -40 °C / +150 °C



Dust collector M1500-1-24 is a one box-shaped device. It is used for local or central filtration in various industrial areas with non-stop operation. It is equipped with the built-in fan and hopper with support legs.

PLANNNS



| Air volume (m ³ /h) | Fan (kW) | Fan underpressure (Pa) | Filter surface load (m ³ /m ² /min) |
|--------------------------------|----------|------------------------|-----------------------------------------------------------|
| 5 100 | 11,0 | 4 100 | 0,72 |
| 5 100-6 000 | 11,0 | 4 000 | 0,85 |
| 6 000-6 720 | 15,0 | 4 300 | 0,95 |
| 6 720-8 240 | 15,0 | 4 150 | 1,16 |



office@siethomgroup.com

www.siethomgroup.com

DESCRIPTION

- one-box shaped dust collector for local or central filtration
- suitable for various industrial areas with non-stop operation (energy, building industry, foundries, welding, chemical and food industry etc.)

OPERATION QUALITIES

- air volume 6 000 - 8 400 m³/h
- filtration area 118 m²
- residual dust concentration at the output <10 mg/m³
- temperature resistance -20 °C / +80 °C
- compressed air needed 6 bar, consumption 6-8 Nm³/h
- pressure loss 1500 Pa

DESIGN

- 1 filter box made of carbon steel
- damping chamber to reduce the noise from the fan
- filter element: 18 filter cartridges
- made of polyester in basic design
- diameter 156 mm, length 2000 mm
- air tank with JET-PULS filter cartridges recovery and timer
- compressed air inlet: internal thread G 1/2"
- pressure switch to indicate the filter cartridges are plugged
- electromagnetic valve (3 pcs), safety valve (1 pc), pressure regulator (1 pc)
- hopper with support legs
- electric control box: 3 x 400 VAC, 50 Hz

ADDITIONAL ACCESSORIES

- rotary valve or dust container
- ATEX version
- service platform for easy maintenance
- non-standard temperature design -40 °C / +150 °C



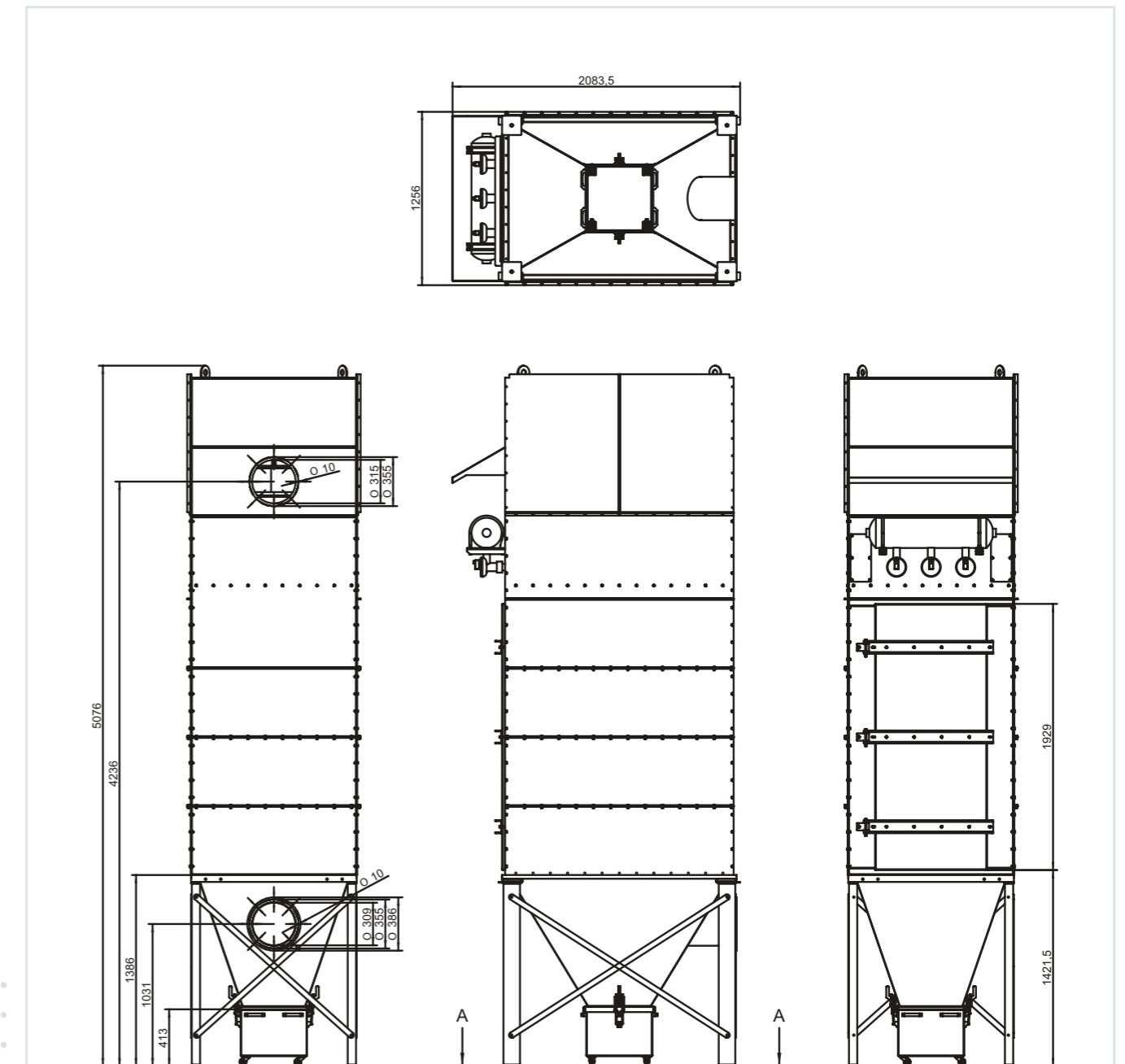
Dust collector M2000-1-18 is a one box-shaped device. It is used for local or central filtration in various industrial areas with non-stop operation. It is equipped with the built-in fan and hopper with support legs.



office@siethomgroup.com

www.siethomgroup.com

PLANNNS



| Air volume (m ³ /h) | Fan (kW) | Fan underpressure (Pa) | Filter surface load (m ³ /m ² /min) |
|--------------------------------|----------|------------------------|-----------------------------------------------------------|
| 6 000-7 500 | 11,0 | 4000-3750 | 0,85-1,06 |
| 7 500-8 400 | 15,0 | 4250-4150 | 1,06-1,19 |
| 7 500-8 400 | 18,5 | 4950-4900 | 1,06-1,19 |

DESCRIPTION

- one-box shaped dust collector for local or central filtration
- suitable for various industrial areas with non-stop operation (energy, building industry, foundries, welding, chemical and food industry etc.)

OPERATION QUALITIES

- air volume 6 000 - 12 000 m³/h
- filtration area 158 m²
- residual dust concentration at the output <10 mg/m³
- temperature resistance -20 °C / +80 °C
- compressed air needed 6 bar, consumption 6-8 Nm³/h
- pressure loss 1500 Pa

DESIGN

- 1 filter box made of carbon steel
- damping chamber to reduce the noise from the fan
- filter element: 24 filter cartridges
- made of polyester in basic design
- diameter 156 mm, length 2000 mm
- air tank with JET-PULS filter cartridges recovery and timer
- compressed air inlet: internal thread G 1/2"
- pressure switch to indicate the filter cartridges are plugged
- electromagnetic valve (4 pcs), safety valve (1 pc), pressure, regulator (1 pc)
- hopper with support legs
- electric control box: 3 x 400 VAC, 50 Hz

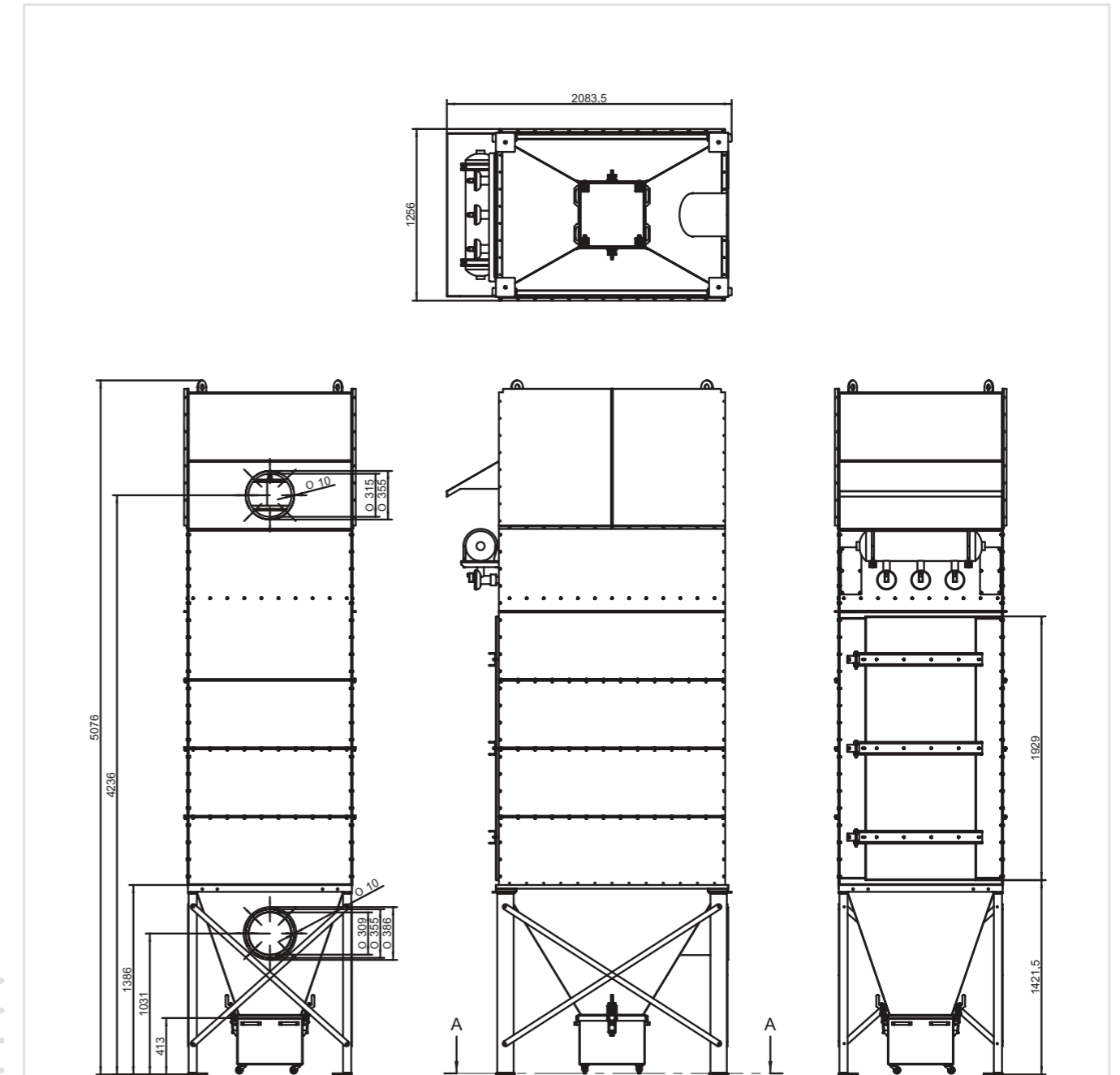
ADDITIONAL ACCESSORIES

- rotary valve or dust container
- ATEX version
- service platform for easy maintenance
- non-standard temperature design -40 °C / +150 °C



Dust collector M2000-1-24 is a one box-shaped device. It is used for local or central filtration in various industrial areas with non-stop operation. It is equipped with the built-in fan and hopper with support legs.

PLANNIS



| Air volume (m ³ /h) | Fan (kW) | Fan underpressure (Pa) | Filter surface load (m ³ /m ² /min) |
|--------------------------------|----------|------------------------|-----------------------------------------------------------|
| 6 000-7 500 | 11,0 | 4 000-3 750 | 0,63-0,79 |
| 7 500-9 600 | 15,0 | 4 250-3 950 | 0,79-1,01 |
| 7 500-12 000 | 18,5 | 4 950-4 350 | 0,79-1,26 |



office@siethomgroup.com

www.siethomgroup.com

DESCRIPTION

- two-box shaped dust collector for central filtration
- suitable for various industrial areas with non-stop operation (energy, building industry, foundries, welding, chemical and food industry etc.)

OPERATION QUALITIES

- air volume 10 000 - 15 500 m³/h
- filtration area 236 m²
- residual dust concentration at the output <10 mg/m³
- temperature resistance -20 °C / +80 °C
- compressed air needed 6 bar, consumption 8-10 Nm³/h
- pressure loss 1500 Pa

DESIGN

- 2 filter boxes made of carbon steel
- standalone fan with vibration joints and dampers
- filter element: 36 filter cartridges
- made of polyester in basic design
- diameter 156 mm, length 2000 mm
- air tank with JET-PULS filter cartridges recovery and timer
- compressed air inlet: internal thread G 1/2"
- 2 pressure switches to indicate the filter cartridges are plugged
- electromagnetic valve (6 pcs), safety valve (2 pc), pressure, regulator (2 pc)
- hopper with support legs
- electric control box: 3 x 400 VAC, 50 Hz
- piping to the fan included

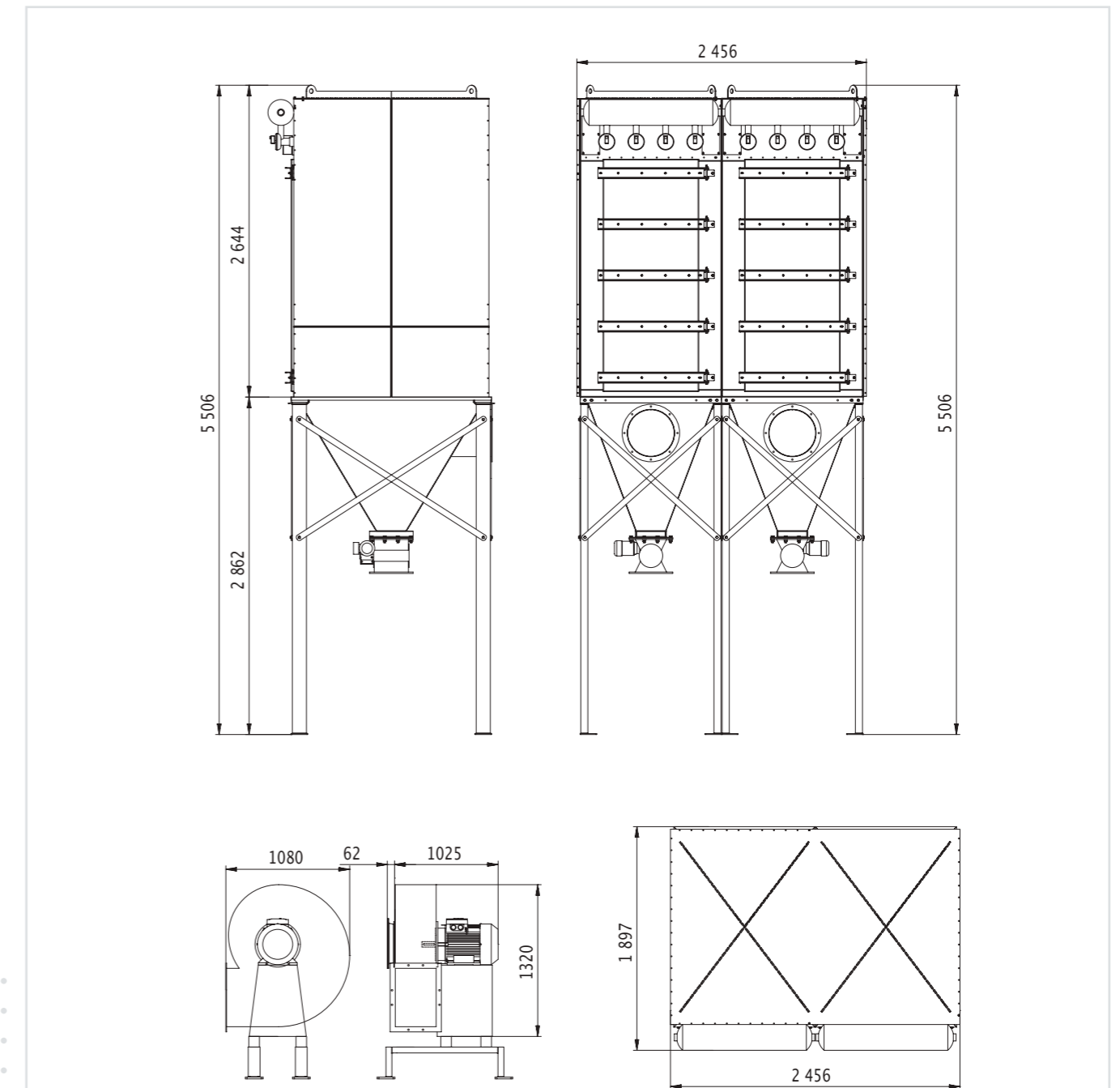
ADDITIONAL ACCESSORIES

- rotary valve or dust container
- ATEX version
- service platform for easy maintenance
- non-standard temperature design -40 °C / +150 °C



Dust collector M2000-2-36 is a two box-shaped device. It is used for central filtration in various industrial areas with non-stop operation. It is equipped with the standalone fan and dust hoppers with support construction.

PLANNNS



| Air volume (m ³ /h) | Fan (kW) | Fan underpressure (Pa) | Filter surface load (m ³ /m ² /min) |
|--------------------------------|----------|------------------------|-----------------------------------------------------------|
| 10 000 | 15,0 | 3 700 | 0,71 |
| 10 000-12 500 | 18,5 | 4 100 | 0,88 |
| 12 500-15 500 | 22,0 | 4 000 | 1,10 |



office@siethomgroup.com

www.siethomgroup.com

DESCRIPTION

- one-box shaped dust collector for local or central filtration
- suitable for various industrial areas with non-stop operation (energy, building industry, foundries, welding, chemical and food industry etc.)

OPERATION QUALITIES

- air volume 16 600 m³/h
- filtration area 158 m²
- fan 37 kW
- residual dust concentration at the output <10 mg/m³
- temperature resistance -20 °C / +80 °C
- compressed air needed 6 bar, consumption 8-12 Nm³/h
- pressure loss 2000 Pa

DESIGN

- 1 filter box made of carbon steel
- standalone fan with vibration joints and dampers
- filter element: 24 filter cartridges
- made of polyester in basic design
- diameter 156 mm, length 2000 mm
- air tank with JET-PULS filter cartridges recovery and timer
- compressed air inlet: internal thread G 1/2"
- pressure switch to indicate the filter cartridges are plugged
- electromagnetic valve (4 pcs), safety valve (1 pc), pressure, regulator (1 pc)
- hopper with support legs
- electric control box: 3 x 400 VAC, 50 Hz
- piping to the fan included
- dust container

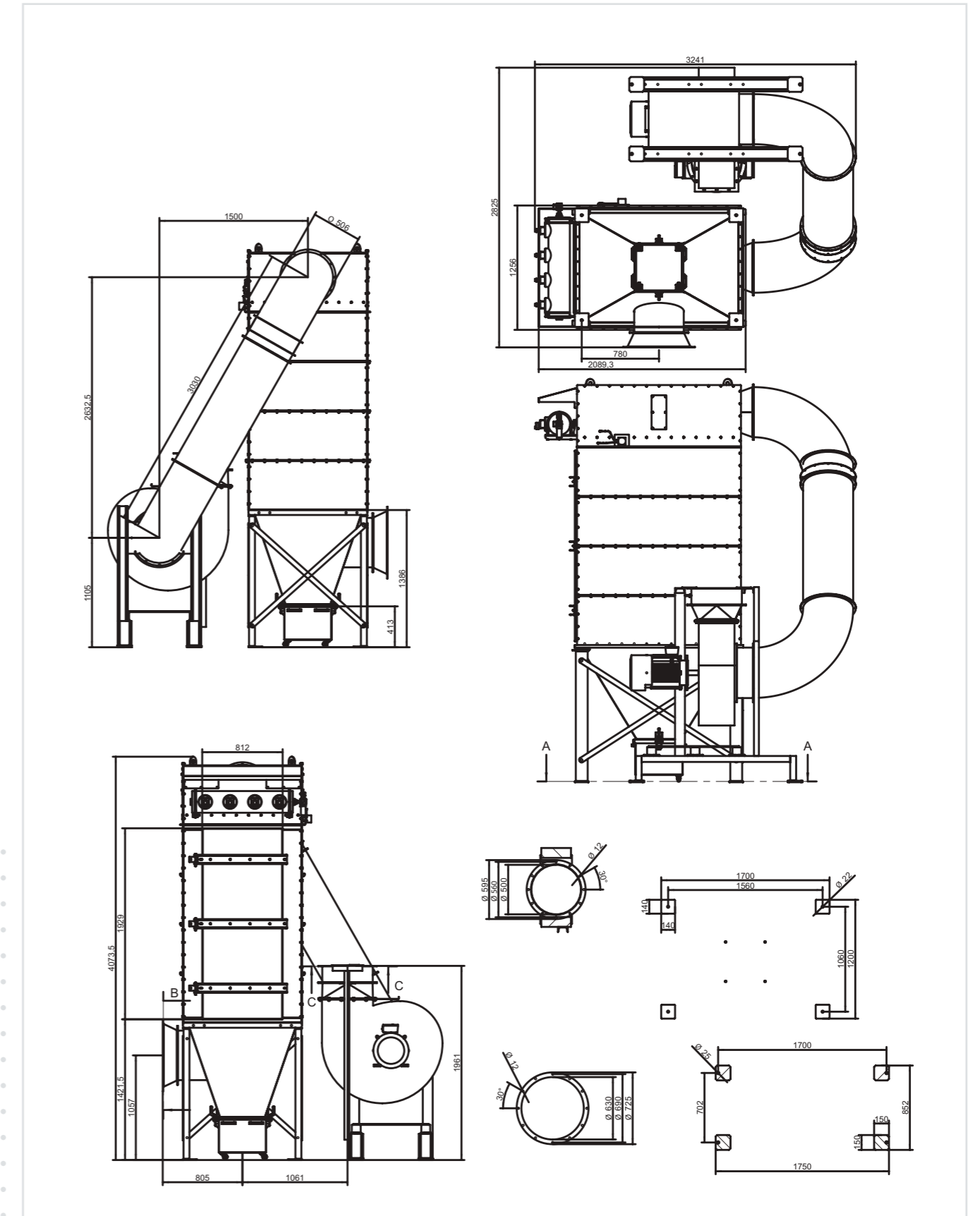
ADDITIONAL ACCESSORIES

- ATEX version
- service platform for easy maintenance
- non-standard temperature design -40 °C / +150 °C



Dust collector M2000-1-24 is a one box-shaped device. It is used for local or central filtration in various industrial areas with non-stop operation. It is equipped with the standalone 37 kW fan, hopper with support construction and dust container.

PLANNIS



office@siethomgroup.com

www.siethomgroup.com

DESCRIPTION

- two-box shaped dust collector for central filtration
- suitable for various industrial areas with non-stop operation (energy, building industry, foundries, welding, chemical and food industry etc.)

OPERATION QUALITIES

- air volume 13 500 - 21 000 m³/h
- filtration area 316 m²
- residual dust concentration at the output <10 mg/m³
- temperature resistance -20 °C / +80 °C
- compressed air needed 6 bar, consumption 8-10 Nm³/h
- pressure loss 1500 Pa

DESIGN

- 2 filter boxes made of carbon steel
- standalone fan with vibration joints and dampers
- filter element: 48 filter cartridges
- made of polyester in basic design
- diameter 156 mm, length 2000 mm
- air tank with JET-PULS filter cartridges recovery and timer
- compressed air inlet: internal thread G 1/2"
- 2 pressure switches to indicate the filter cartridges are plugged
- electromagnetic valve (8 pcs), safety valve (2 pc), pressure regulator (2 pc)
- hopper with support legs
- electric control box: 3 x 400 VAC, 50 Hz
- piping to the fan included

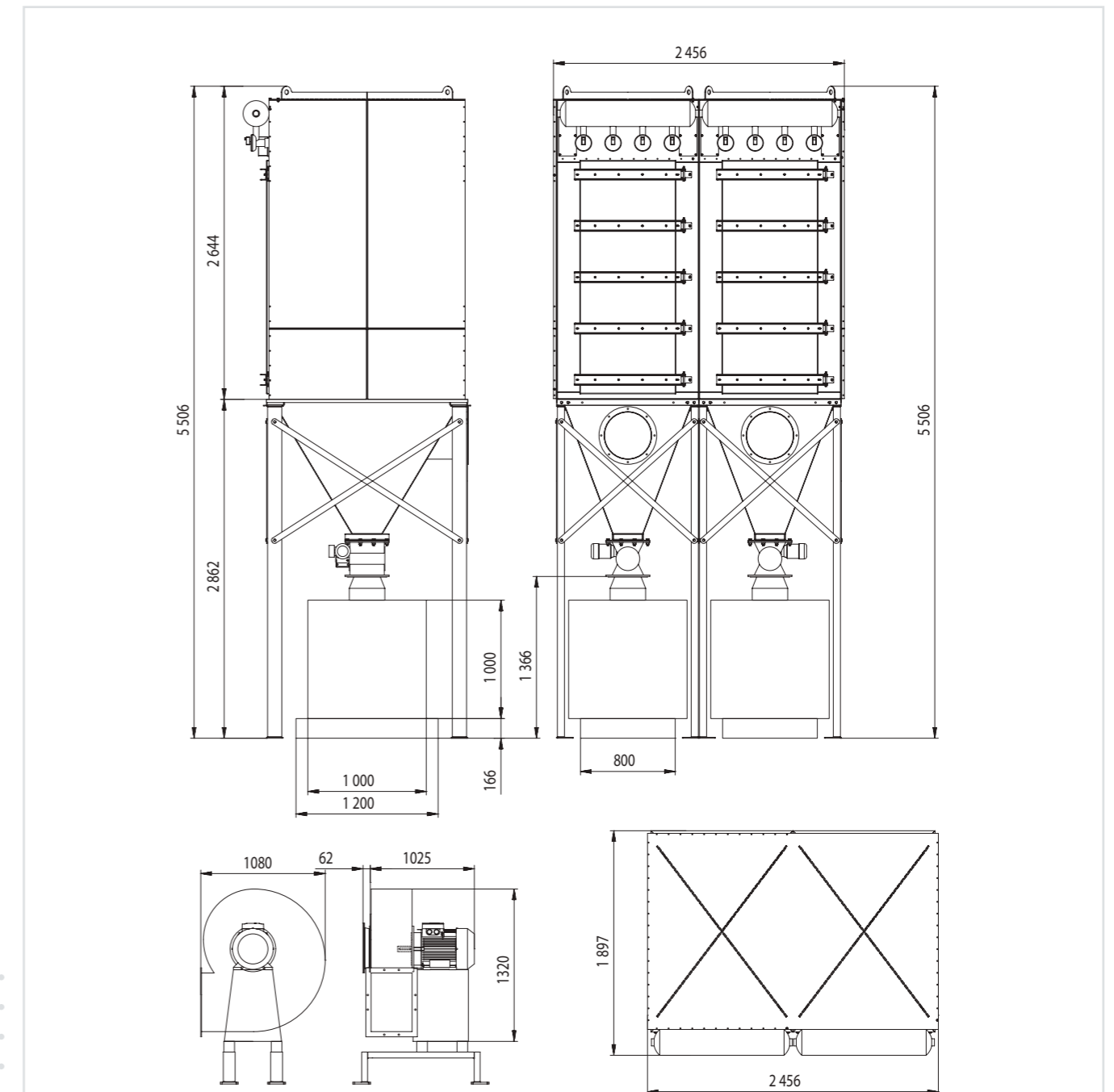
ADDITIONAL ACCESSORIES

- rotary valve or dust container
- ATEX version
- service platform for easy maintenance
- non-standard temperature design -40 °C / +150 °C



Dust collector M2000-2-48 is a two box-shaped device. It is used for central filtration in various industrial areas with non-stop operation. It is equipped with the standalone fan and dust hoppers with support construction.

PLANNNS



| Air volume (m ³ /h) | Fan (kW) | Fan underpressure (Pa) | Filter surface load (m ³ /m ² /min) |
|--------------------------------|----------|------------------------|-----------------------------------------------------------|
| 13 500 | 18,5 | 3 900 | 0,71 |
| 13 500-17 000 | 30,0 | 4 600 | 0,90 |
| 17 000-21 000 | 37,0 | 4 600 | 1,10 |



office@siethomgroup.com

www.siethomgroup.com

DESCRIPTION

- three-box shaped dust collector for central filtration
- suitable for various industrial areas with non-stop operation (energy, building industry, foundries, welding, chemical and food industry etc.)

OPERATION QUALITIES

- air volume 15 000 - 23 500 m³/h
- filtration area 354 m²
- residual dust concentration at the output <10 mg/m³
- temperature resistance -20 °C / +80 °C
- compressed air needed 6 bar, consumption 10-12 Nm³/h
- pressure loss 1500 Pa

DESIGN

- 3 filter boxes made of carbon steel
- standalone fan with vibration joints and dampers
- filter element: 54 filter cartridges
- made of polyester in basic design
- diameter 156 mm, length 2000 mm
- air tank with JET-PULS filter cartridges recovery and timer
- compressed air inlet: internal thread G 1/2"
- 3 pressure switches to indicate the filter cartridges are plugged
- electromagnetic valve (9 pcs), safety valve (3 pc), pressure regulator (3 pc)
- hopper with support legs
- electric control box: 3 x 400 VAC, 50 Hz
- piping to the fan included

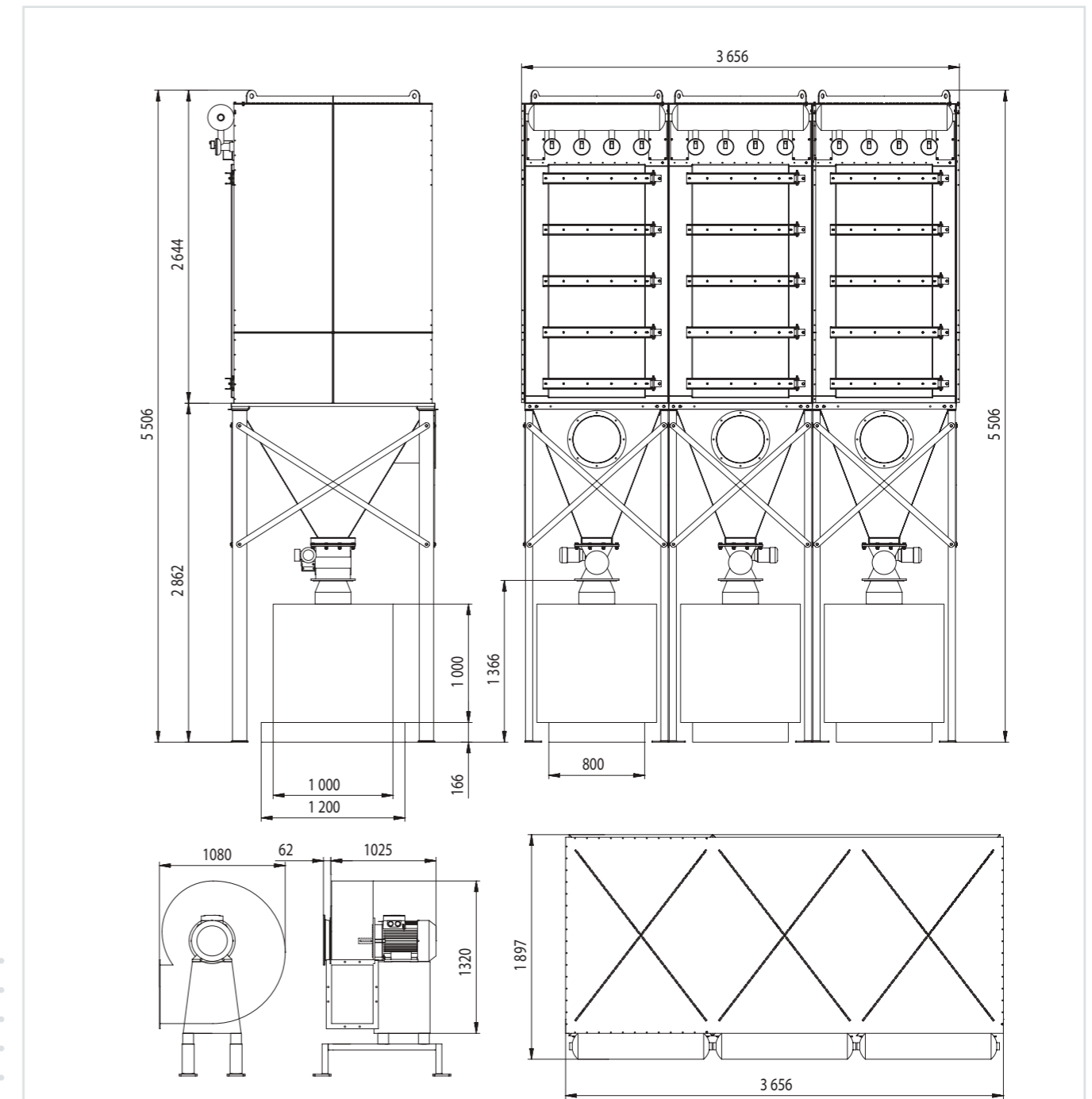
ADDITIONAL ACCESSORIES

- rotary valve or dust container
- ATEX version
- service platform for easy maintenance
- non-standard temperature design -40 °C / +150 °C



Dust collector M2000-3-54 is a three box-shaped device. It is used for central filtration in various industrial areas with non-stop operation. It is equipped with the standalone fan and dust hoppers with support construction.

PLANNNS



| Air volume (m ³ /h) | Fan (kW) | Fan underpressure (Pa) | Filter surface load (m ³ /m ² /min) |
|--------------------------------|----------|------------------------|-----------------------------------------------------------|
| 15 000 | 22,0 | 3 900 | 0,71 |
| 15 000-20 000 | 30,0 | 3 700 | 0,94 |
| 20 000-23 500 | 37,0 | 4 000 | 1,10 |



office@siethomgroup.com

www.siethomgroup.com

DESCRIPTION

- three-box shaped dust collector for central filtration
- suitable for various industrial areas with non-stop operation (energy, building industry, foundries, welding, chemical and food industry etc.)

OPERATION QUALITIES

- air volume 20 000 - 31 500 m³/h
- filtration area 474 m²
- residual dust concentration at the output <10 mg/m³
- temperature resistance -20 °C / +80 °C
- compressed air needed 6 bar, consumption 10-12 Nm³/h
- pressure loss 1500 Pa

DESIGN

- 3 filter boxes made of carbon steel
- standalone fan with vibration joints and dampers
- filter element: 72 filter cartridges
- made of polyester in basic design
- diameter 156 mm, length 2000 mm
- air tank with JET-PULS filter cartridges recovery and timer
- compressed air inlet: internal thread G 1/2"
- 3 pressure switches to indicate the filter cartridges are plugged
- electromagnetic valve (12 pcs), safety valve (3 pc), pressure regulator (3 pc)
- hopper with support legs
- electric control box: 3 x 400 VAC, 50 Hz
- piping to the fan included

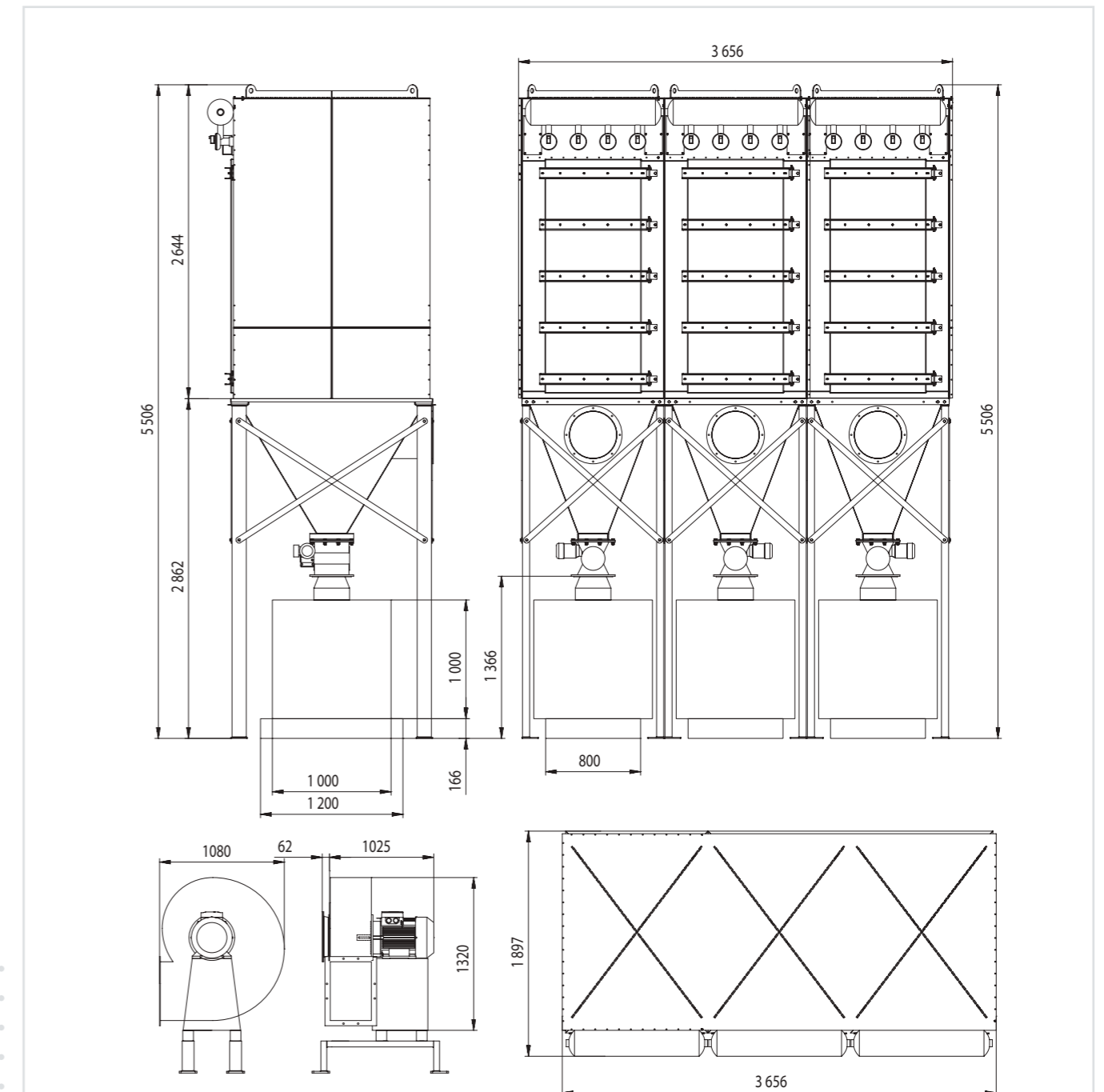
ADDITIONAL ACCESSORIES

- rotary valve or dust container
- ATEX version
- service platform for easy maintenance
- non-standard temperature design -40 °C / +150 °C



Dust collector M2000-3-72 is a three box-shaped device. It is used for central filtration in various industrial areas with non-stop operation. It is equipped with the standalone fan and dust hoppers with support construction.

PLANNNS



| Air volume (m ³ /h) | Fan (kW) | Fan underpressure (Pa) | Filter surface load (m ³ /m ² /min) |
|--------------------------------|----------|------------------------|-----------------------------------------------------------|
| 20 000 | 37,0 | 4 500 | 0,70 |
| 20 000-26 000 | 45,0 | 4 500 | 0,91 |
| 26 000-31 500 | 55,0 | 4 600 | 1,10 |



office@siethomgroup.com

www.siethomgroup.com

DESCRIPTION

- four-box shaped dust collector for central filtration
- suitable for various industrial areas with non-stop operation (energy, building industry, foundries, welding, chemical and food industry etc.)

OPERATION QUALITIES

- air volume 20 000 - 31 500 m³/h
- filtration area 474 m²
- residual dust concentration at the output <10 mg/m³
- temperature resistance -20 °C / +80 °C
- compressed air needed 6 bar, consumption 14-16 Nm³/h
- pressure loss 1500 Pa

DESIGN

- 4 filter boxes made of carbon steel
- standalone fan with vibration joints and dampers
- filter element: 72 filter cartridges
- made of polyester in basic design
- diameter 156 mm, length 2000 mm
- air tank with JET-PULS filter cartridges recovery and timer
- compressed air inlet: internal thread G 1/2"
- 4 pressure switches to indicate the filter cartridges are plugged
- electromagnetic valve (12 pcs), safety valve (4 pc), pressure regulator (4 pc)
- hopper with support legs
- electric control box: 3 x 400 VAC, 50 Hz
- piping to the fan included

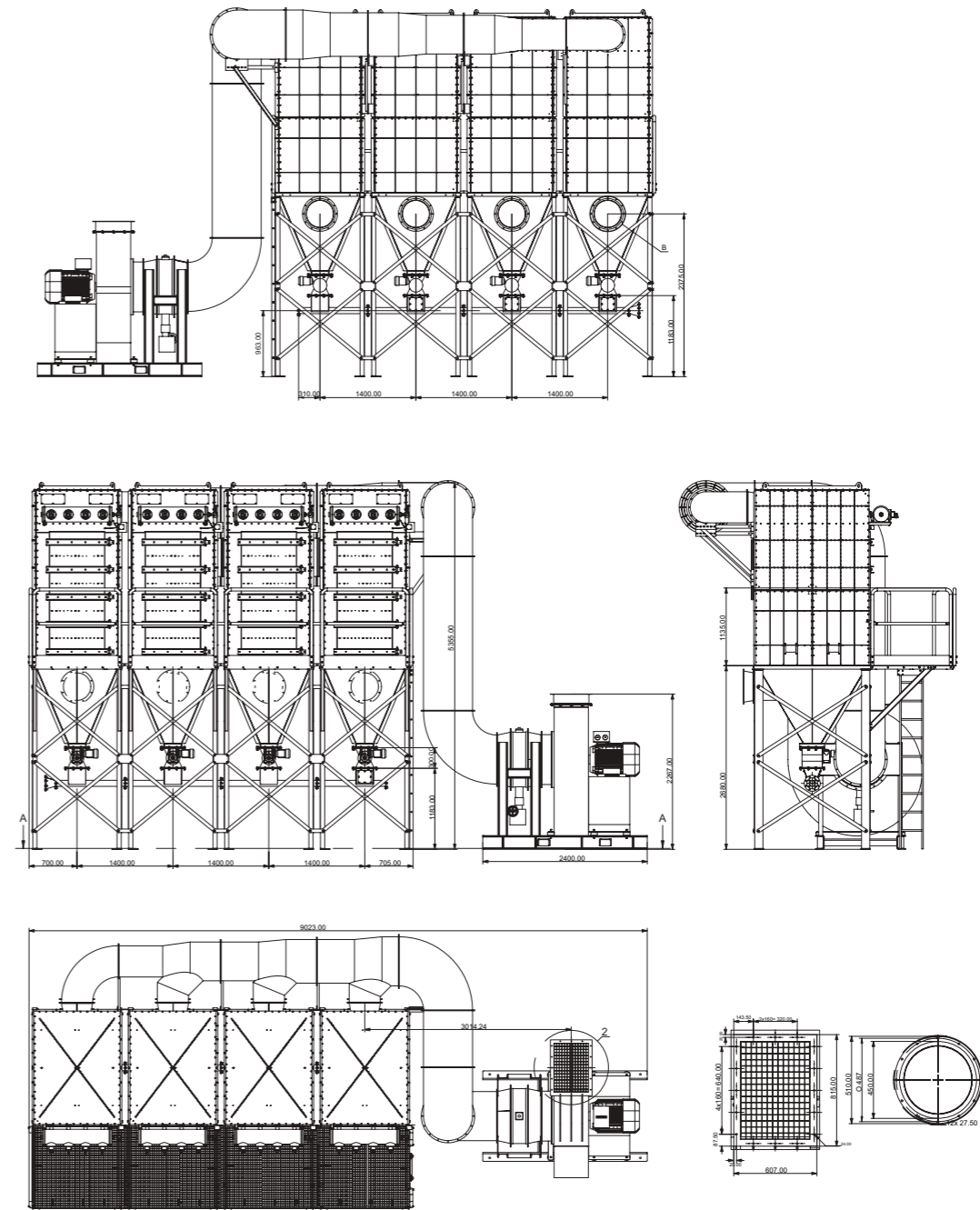
ADDITIONAL ACCESSORIES

- rotary valve or dust container
- ATEX version
- service platform for easy maintenance
- non-standard temperature design -40 °C / +150 °C



Dust collector M2000-4-72 is a four box-shaped device. It is used for central filtration in various industrial areas with non-stop operation. It is equipped with the standalone fan and dust hoppers with support construction.

PLANNNS



| Air volume (m ³ /h) | Fan (kW) | Fan underpressure (Pa) | Filter surface load (m ³ /m ² /min) |
|--------------------------------|----------|------------------------|-----------------------------------------------------------|
| 20 000 | 37,0 | 4 500 | 0,71 |
| 20 000-26 000 | 45,0 | 4 500 | 0,91 |
| 26 000-31 500 | 55,0 | 4 600 | 1,10 |



office@siethomgroup.com

www.siethomgroup.com

DESCRIPTION

- four-box shaped dust collector for central filtration
- suitable for various industrial areas with non-stop operation (energy, building industry, foundries, welding, chemical and food industry etc.)

OPERATION QUALITIES

- air volume 27 000 - 42 000 m³/h
- filtration area 632 m²
- residual dust concentration at the output <10 mg/m³
- temperature resistance -20 °C / +80 °C
- compressed air needed 6 bar, consumption 14-16 Nm³/h
- pressure loss 1500 Pa

DESIGN

- 4 filter boxes made of carbon steel
- standalone fan with vibration joints and dampers
- filter element: 96 filter cartridges
- made of polyester in basic design
- diameter 156 mm, length 2000 mm
- air tank with JET-PULS filter cartridges recovery and timer
- compressed air inlet: internal thread G 1/2"
- 4 pressure switches to indicate the filter cartridges are plugged
- electromagnetic valve (16 pcs), safety valve (4 pc), pressure regulator (4 pc)
- hopper with support legs
- electric control box: 3 x 400 VAC, 50 Hz
- piping to the fan included

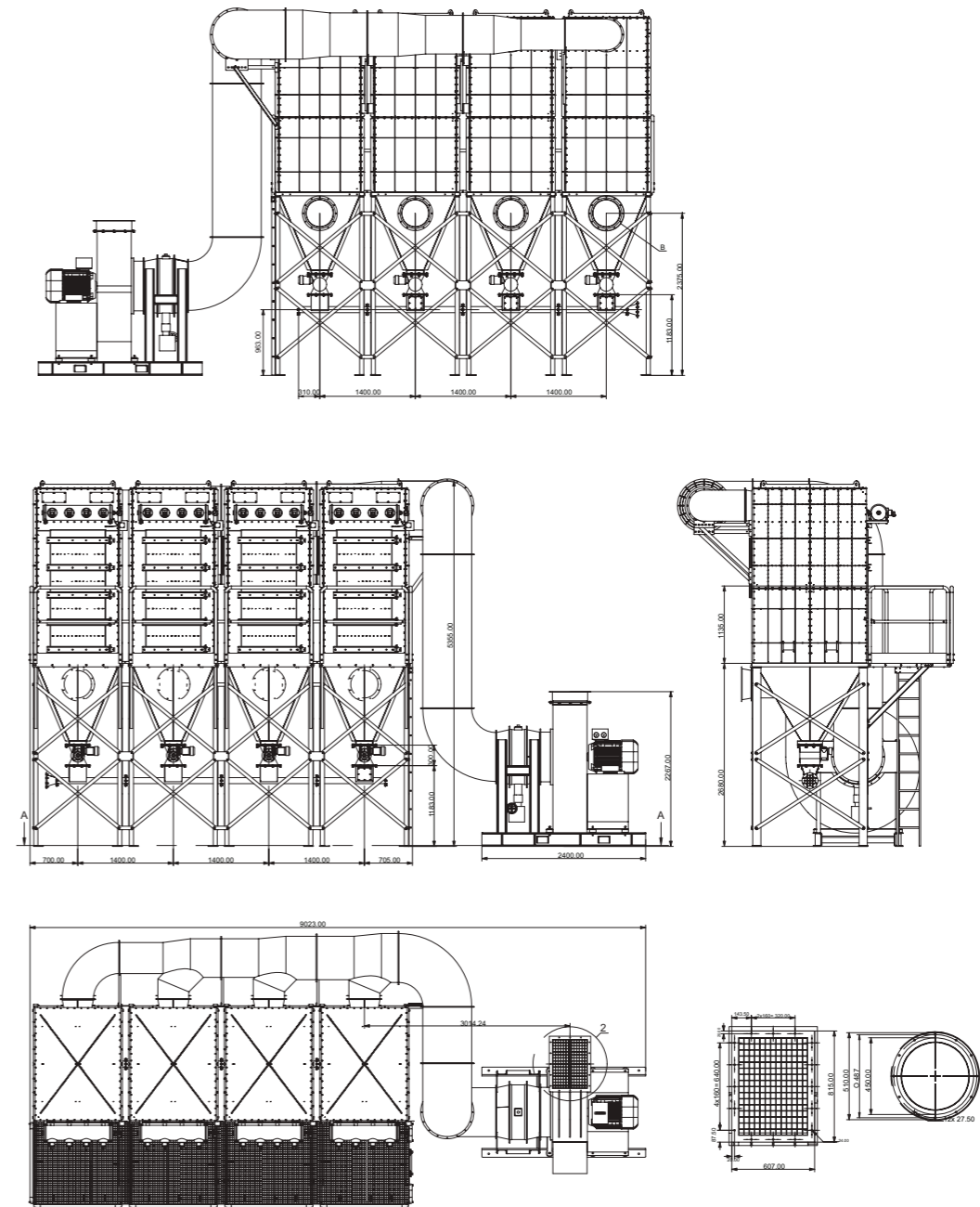
ADDITIONAL ACCESSORIES

- rotary valve or dust container
- ATEX version
- service platform for easy maintenance
- non-standard temperature design -40 °C / +150 °C



Dust collector M2000-4-96 is a four box-shaped device. It is used for central filtration in various industrial areas with non-stop operation. It is equipped with the standalone fan and dust hoppers with support construction.

PLANNNS



| Air volume (m ³ /h) | Fan (kW) | Fan underpressure (Pa) | Filter surface load (m ³ /m ² /min) |
|--------------------------------|----------|------------------------|-----------------------------------------------------------|
| 27 000 | 45,0 | 4 200 | 0,70 |
| 27 000-34 000 | 55,0 | 3 600 | 0,90 |
| 34 000-42 000 | 75,0 | 3 600 | 1,10 |



office@siethomgroup.com

www.siethomgroup.com

SIETHOM TECHNISCHES BÜRO GMBH

Aumühlstraße 45

4050 Traun

AUSTRIA

Tel.: +43 (0)7229 69079

Fax: +43 (0)7229 69067

Poschacherstraße 35

4020 Linz

AUSTRIA

Tel.: +43 (0)732 650128

Fax: +43 (0)732 650128-99